



Mens, Maatwerk & Techniek
Professionals in Flow & Fluid Technology

Bestel eenvoudig
uw persluchtproducten
Zowel offline als online
30.000 producten



Perslucht Catalogus 2020
Ook online www.aimfluid.nl



MENS, MAATWERK & TECHNIEK
Professionals in Flow & Fluid Technology

www.aimfluid.nl

A close-up photograph of water splashing, with many bubbles and ripples, set against a light blue background.

VRAGEN OVER AFSLUITERS, VENTIELEN & APPENDAGES ?

BEL OF MAIL

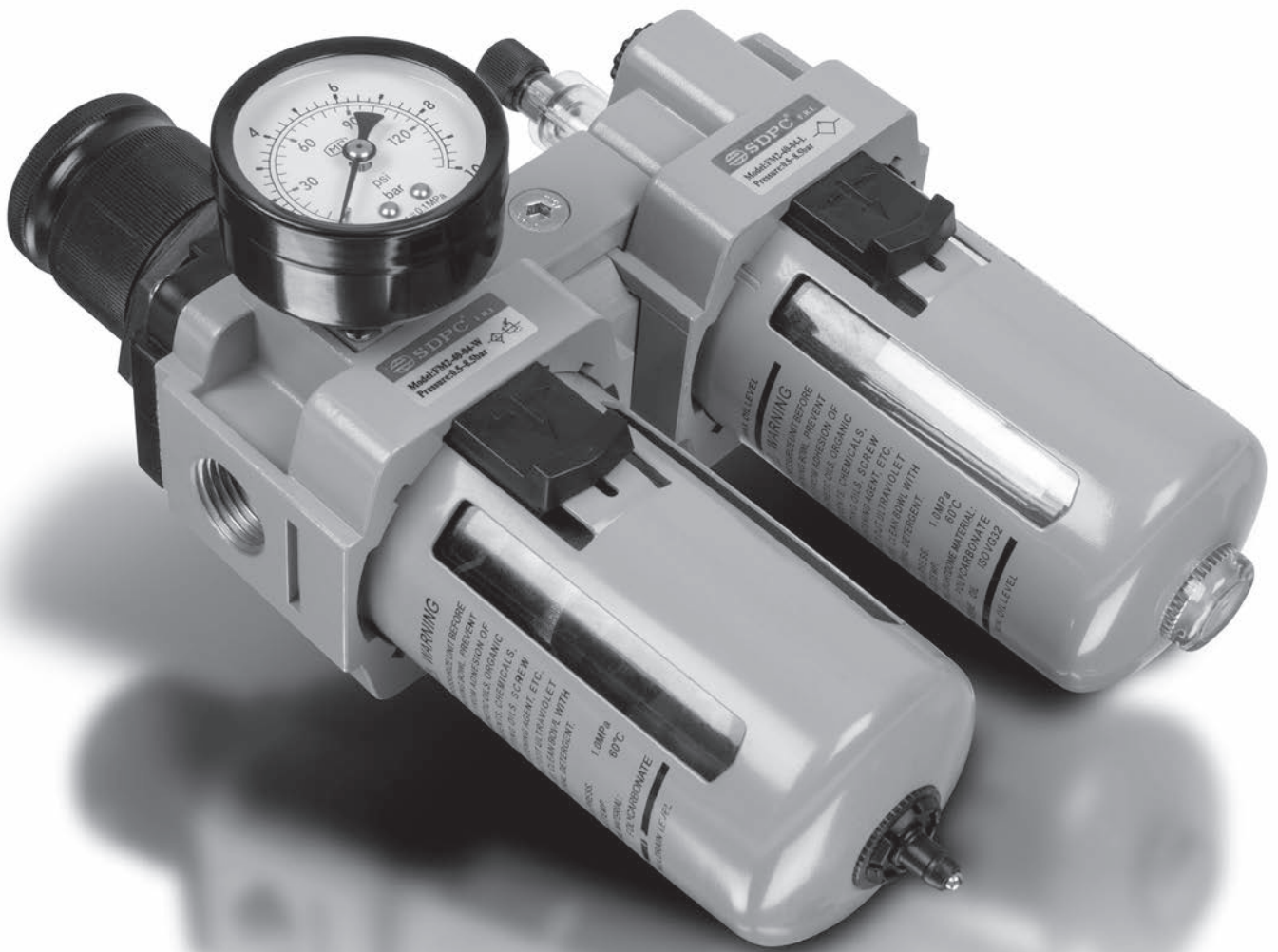
aim fluid control

+31 (0)499 49 10 90

info@aimfluid.nl

| **SPECIALIST IN FLOW & FLUID TECHNOLOGY** |

aim ontzorgt



| | | | | | |
|---|------------|---|---|------------|---|
|  | Pagina 92 | Persluchtfilters |  | Pagina 127 | Flowmeters |
|  | Pagina 93 | AIRCOMP oliefilters |  | Pagina 129 | NEW ELETTROTEC druk- en vacuümschakelaars |
|  | Pagina 94 | KELM persluchtverzorging - metaal |  | Pagina 131 | NEW ELETTROTEC temperatuur- schakelaars |
|  | Pagina 105 | FM persluchtverzorging - metaal |  | Pagina 132 | AIR-PRO in-line filters/regelaars |
|  | Pagina 108 | AIRCOMP persluchtverzorging - kunststof |  | Pagina 133 | Manometers |
|  | Pagina 120 | AIGNEP persluchtverzorging - kunststof |  | Pagina 136 | Glycerine manometers |
|  | Pagina 126 | ITAP waterconditionering |  | Pagina 140 | KELM geluidsdempers |



AIR VIP EVO persluchtfilters

Schone perslucht door optimale fijnfiltratie, minimaliseert onderhoud aan het persluchtstelsel.

Specificaties:

- A-filterelement:** filtratie 1 µm, restoliegehalte 0,1 µm ppm.
Algemene filtratie, verwijdert vaste deeltjes, water en olie aerosol. Geschikt voor algemene persluchttoepassingen.
Initiële drukval: <60 mbar.
- B-filterelement:** filtratie 0,01 µm, restoliegehalte 0,01 µm ppm.
Hoge filtratie-efficiëntie, verwijdert vaste deeltjes en olie aerosol. Voor bescherming van instrumentatie, adsorptiedrogers en filtratie bij punt van gebruik.
Initiële drukval: <80 mbar.
- C-filterelement:** restoliegehalte 0,003 µm ppm.
Reductie van geuren en oliedampen. Geschikt voor toepassingen in o.a. voedingsmiddelenindustrie, farmaceutische industrie en elektronische industrie.
Initiële drukval: <250 mbar.

Temperatuur:
1°C tot 80°C

Maximale werkdruk:
0 tot 16 bar

Materiaal filterelement: borosilicaat filtermedia (geplooid) versterkt met een geperforeerde RVS binnenmantel.

Materiaal filterhuis: Geanodiseerd aluminium met polyester coating aan buitenzijde. Buna N afdichtingen.

Certificering filterelement: Volgens ISO 8573-1:2010, getest conform ISO 12500.

Certificering filterhuis: Volgens Directive PED 97/23/EC Fluids Group 2.

Genoemde flow is gemeten bij perslucht 7 bar, 20°C en 0% relatieve luchtvochtigheid.

Genoemde afmetingen betreffen het filterhuis exclusief verschilddrukmeter.

A-filter - compleet voorfilter

TECH DATA
30120



B-filter - compleet nafilter

TECH DATA
30120



C-filter - compleet actief koolfilter

TECH DATA
30120



Met 0,1 µm filterelement, automatische condensaatfap en verschilddrukmeter

| FILT | H mm | B mm | FLOW | € | |
|------------|--------|------|------|-------|---------|
| 5700030EVO | 1/4" | 211 | 94 | 530 | 374.95 |
| 5700100EVO | 1/2" | 286 | 94 | 1750 | 428.45 |
| 5700180EVO | 3/4" | 323 | 128 | 3116 | 512.45 |
| 5700290EVO | 1" | 378 | 128 | 5000 | 562.60 |
| 5700610EVO | 1.1/2" | 560 | 190 | 11660 | 881.00 |
| 5700930EVO | 2" | 659 | 190 | 16660 | 1269.05 |

Met 0,01 µm filterelement, automatische condensaatfap en verschilddrukmeter

| FILT | H mm | B mm | FLOW | € | |
|------------|--------|------|------|-------|---------|
| 5710030EVO | 1/4" | 211 | 94 | 530 | 374.95 |
| 5710100EVO | 1/2" | 286 | 94 | 1750 | 428.45 |
| 5710180EVO | 3/4" | 323 | 128 | 3116 | 512.45 |
| 5710290EVO | 1" | 378 | 128 | 5000 | 562.60 |
| 5710610EVO | 1.1/2" | 560 | 190 | 11660 | 881.00 |
| 5710930EVO | 2" | 659 | 190 | 16660 | 1269.05 |

Met 0,003 µm filterelement en automatische condensaatfap

| FILT | H mm | B mm | FLOW | € | |
|------------|--------|------|------|-------|---------|
| 5720030EVO | 1/4" | 211 | 94 | 530 | 279.65 |
| 5720100EVO | 1/2" | 286 | 94 | 1750 | 333.05 |
| 5720180EVO | 3/4" | 323 | 128 | 3116 | 418.65 |
| 5720290EVO | 1" | 378 | 128 | 5000 | 468.80 |
| 5720610EVO | 1.1/2" | 560 | 190 | 11660 | 785.65 |
| 5720930EVO | 2" | 659 | 190 | 16660 | 1178.45 |

Filterelementen AIR VIP EVO

TECH DATA
30121

A-filterelement
1 µm/
0,1 µm ppm



| FILT | € | |
|------------|--------|--------|
| 5800030EVO | 1/4" | 71.15 |
| 5800100EVO | 1/2" | 97.95 |
| 5800180EVO | 3/4" | 129.50 |
| 5800290EVO | 1" | 137.40 |
| 5800610EVO | 1.1/2" | 260.70 |
| 5800930EVO | 2" | 345.85 |

TECH DATA
30121

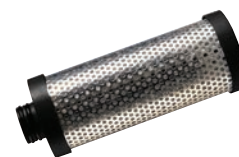
B-filterelement
0,01 µm/
0,01 µm ppm



| FILT | € | |
|------------|--------|--------|
| 5810030EVO | 1/4" | 71.15 |
| 5810100EVO | 1/2" | 97.95 |
| 5810180EVO | 3/4" | 129.50 |
| 5810290EVO | 1" | 137.40 |
| 5810610EVO | 1.1/2" | 260.70 |
| 5810930EVO | 2" | 345.85 |

TECH DATA
30121

C-filterelement
0,003 µm ppm



| FILT | € | |
|------------|--------|--------|
| 5820030EVO | 1/4" | 71.15 |
| 5820100EVO | 1/2" | 97.95 |
| 5820180EVO | 3/4" | 129.50 |
| 5820290EVO | 1" | 137.40 |
| 5820610EVO | 1.1/2" | 260.70 |
| 5820930EVO | 2" | 363.40 |

Persluchtfilters



Filterelementen AIR VIP

- Geschikt voor oud model AIR VIP filterhuizen, deze elementen passen niet in de nieuwe AIR VIP EVO filterhuizen

TECH DATA
30121



A-filterelement 1 µm/0,1 µm ppm
(voorheen oranje)

| FILT | | € |
|---------|--------|--------|
| 5800030 | 1/4" | 71.15 |
| 5800100 | 1/2" | 97.95 |
| 5800180 | 3/4" | 129.50 |
| 5800290 | 1" | 137.40 |
| 5800610 | 1.1/2" | 260.70 |
| 5800930 | 2" | 345.85 |

B-filterelement 0,01 µm/0,01 µm ppm
(voorheen blauw)

| FILT | | € |
|---------|--------|--------|
| 5810030 | 1/4" | 71.15 |
| 5810100 | 1/2" | 97.95 |
| 5810180 | 3/4" | 129.50 |
| 5810290 | 1" | 137.40 |
| 5810610 | 1.1/2" | 260.70 |
| 5810930 | 2" | 345.85 |

C-filterelement 0,003 µm ppm
(voorheen zwart)

| FILT | | € |
|---------|--------|--------|
| 5820030 | 1/4" | 71.15 |
| 5820100 | 1/2" | 97.95 |
| 5820180 | 3/4" | 129.50 |
| 5820290 | 1" | 137.40 |
| 5820610 | 1.1/2" | 260.70 |
| 5820930 | 2" | 363.40 |

Montagesets AIR VIP EVO

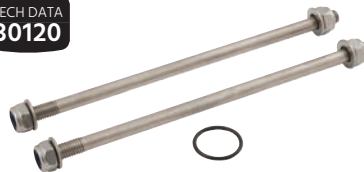
TECH DATA
30121



Wandmontageset voor 1 filter

| FILT | To Suit | € |
|------------|------------------|-------|
| 5912100EVO | 1/4"-3/8"-1/2" | 40.70 |
| 5912290EVO | 3/4"-1"-1.1/4" | 41.75 |
| 5912610EVO | 1.1/2"-2"-2.1/2" | 53.85 |

TECH DATA
30120



Montageset voor onderlinge koppeling van 2 filters

| FILT | To Suit | € |
|------------|------------------|-------|
| 5913100EVO | 1/4"-3/8"-1/2" | 23.70 |
| 5913290EVO | 3/4"-1"-1.1/4" | 32.65 |
| 5913610EVO | 1.1/2"-2"-2.1/2" | 37.10 |

Verschildrukmeter

Temperatuur: 5°C tot 80°C

Maximale werkdruk: 0,8 tot 16 bar

TECH DATA
30120



Voor A en B filters

| FILT | H mm | € |
|---------|------|-------|
| 5914000 | 88 | 97.95 |

Automatische condensataaftap

Temperatuur: 5°C tot 70°C

TECH DATA
30120



Voor A, B en C filters

| FILT | H mm | B mm | € |
|---------|------|------|--------|
| 5917000 | 83 | 37 | 107.50 |

Oliefilters

Conveyer-X oliefilter

TECH DATA
669

Voor een prettige en veilige werkomgeving. ARBO voorgeschreven.

Aan persluchtconditionering wordt aandacht besteedt door filtratie, juiste drukregeling en een goede smering.

Noodzakelijk voor langdurige probleemloze werking van uw kostbare persluchtapparatuur.

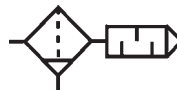
De uitgaande perslucht moet ook worden geconditioneerd!

De geëxpandeerde gesmeerde perslucht, via de uitgang van de persluchtapparatuur, mag niet in de werkomgeving worden afgeblazen. Deze lucht moet door slangen worden geleid naar de CONVEYOR-X.

De CONVEYOR-X / OIL-REMOVER-SILENCER heeft een grote aansluiting waardoor meerdere afblaasleidingen kunnen worden aangesloten.

Werkings: Geëxpandeerde perslucht wordt gedempt en van olie gezuiverd. Geluid wordt gedempt tot ca. 25 dBA. 99.999 % van alle restolie wordt uitgefilterd en in de lekbak verzameld.

Temperatuur: 2°C tot 50°C



Inclusief demper - voor een gezonde werkomgeving

| FRL | | B mm | H mm | FLOW | € |
|----------|--------------|------|------|-------|--------|
| 55202100 | X-25-1/2" | 60 | 107 | 1500 | 109.50 |
| 55203200 | X-50-1" | 60 | 155 | 3000 | 147.85 |
| 55204800 | X-150-1.1/2" | 86 | 112 | 10000 | 243.40 |



Persluchtverzorging

TECH DATA
3060

40 micron, standaard
Semi-automatische aftap en automatische aftap verkrijgbaar
Reservoir met beschermkap in serie 300 & 400
Automatische aftap is niet verkrijgbaar in de 200 serie
Bereik: 1,5 tot 9,0 bar

Temperatuur:
-5°C tot +60°C

Maximale druk:
10 bar

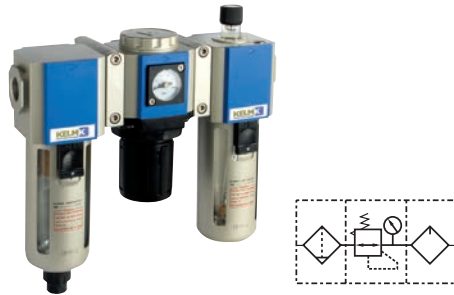


Filter + drukregelaar + olienevelaar



200 serie F+R+L - semi-automatische aftap - met montagebeugel en 10 bar manometer - BSP

| 0338 | BSPP | LPM | € |
|---------------|------|------|--------|
| KCS200-06-F-3 | 1/8" | 3000 | 95.80 |
| KCS200-08-F-3 | 1/4" | 3000 | 100.60 |

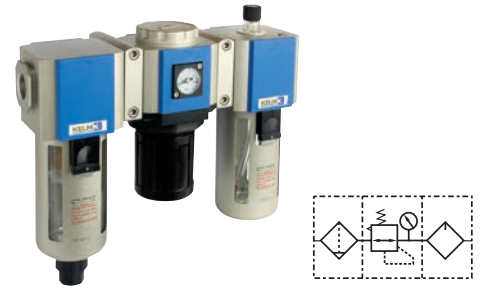


300 serie F+R+L - automatische aftap - met montagebeugel en 10 bar manometer - BSP

| 0338 | BSPP | LPM | € |
|-----------------|------|------|--------|
| KCS300-08-A-F-3 | 1/4" | 4000 | 199.25 |
| KCS300-10-A-F-3 | 3/8" | 4000 | 209.20 |
| KCS300-15-A-F-3 | 1/2" | 4000 | 219.60 |

300 serie F+R+L - semi-automatische aftap - met montagebeugel en 10 bar manometer - BSP

| 0338 | BSPP | LPM | € |
|---------------|------|------|--------|
| KCS300-08-F-3 | 1/4" | 4000 | 144.65 |
| KCS300-10-F-3 | 3/8" | 4000 | 151.75 |
| KCS300-15-F-3 | 1/2" | 4000 | 159.40 |



400 serie F+R+L - automatische aftap - met montagebeugel en 10 bar manometer - BSP

| 0338 | BSPP | LPM | € |
|-----------------|------|------|--------|
| KCS400-10-A-F-3 | 3/8" | 6000 | 278.00 |
| KCS400-15-A-F-3 | 1/2" | 6000 | 291.90 |

400 serie F+R+L - semi-automatische aftap - met montagebeugel en 10 bar manometer - BSP

| 0338 | BSPP | LPM | € |
|---------------|------|------|--------|
| KCS400-10-F-3 | 3/8" | 6000 | 207.65 |
| KCS400-15-F-3 | 1/2" | 6000 | 218.05 |



600 serie F+R+L - automatische aftap - met montagebeugel en 10 bar manometer - BSP

| 0338 | BSPP | LPM | € |
|-----------------|------|------|--------|
| KCS600-20-A-F-3 | 3/4" | 9000 | 525.05 |
| KCS600-25-A-F-3 | 1" | 9000 | 551.25 |

600 serie F+R+L - semi-automatische aftap - met montagebeugel en 10 bar manometer - BSP

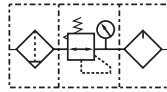
| 0338 | BSPP | LPM | € |
|---------------|------|------|--------|
| KCS600-20-F-3 | 3/4" | 9000 | 361.70 |
| KCS600-25-F-3 | 1" | 9000 | 383.55 |

Persluchtverzorging

TECH DATA
3061

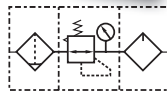
40 micron, standaard
Semi-automatische aftap en automatische aftap verkrijgbaar
Reservoir met beschermkap in serie 300 & 400
Automatische aftap is niet verkrijgbaar in de 200 serie
Bereik: 1,5 tot 9,0 bar

Filter/regelaar + olienevelaar



200 serie FR+L - semi-automatische aftap - met montagebeugel en 10 bar manometer - BSP

| 0338 | BSPP | LPM | € |
|----------------|------|------|-------|
| KFCS200-06-F-3 | 1/8" | 3000 | 82.55 |
| KFCS200-08-F-3 | 1/4" | 3000 | 86.65 |



300 serie FR+L - automatische aftap - met montagebeugel en 10 bar manometer - BSP

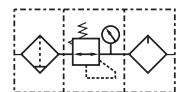
| 0338 | BSPP | LPM | € |
|------------------|------|------|--------|
| KFCS300-08-A-F-3 | 1/4" | 4000 | 155.10 |
| KFCS300-10-A-F-3 | 3/8" | 4000 | 162.85 |
| KFCS300-15-A-F-3 | 1/2" | 4000 | 171.05 |

300 serie FR+L - semi-automatische aftap - met montagebeugel en 10 bar manometer - BSP

| 0338 | BSPP | LPM | € |
|----------------|------|------|--------|
| KFCS300-08-F-3 | 1/4" | 4000 | 108.35 |
| KFCS300-10-F-3 | 3/8" | 4000 | 113.85 |
| KFCS300-15-F-3 | 1/2" | 4000 | 119.55 |

Temperatuur:
-5°C tot +60°C

Maximale druk:
10 bar

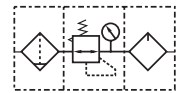


400 serie FR+L - automatische aftap - met montagebeugel en 10 bar manometer - BSP

| 0338 | BSPP | LPM | € |
|------------------|------|------|--------|
| KFCS400-10-A-F-3 | 3/8" | 6000 | 226.85 |
| KFCS400-15-A-F-3 | 1/2" | 6000 | 238.20 |

400 serie FR+L - semi-automatische aftap - met montagebeugel en 10 bar manometer - BSP

| 0338 | BSPP | LPM | € |
|----------------|------|------|--------|
| KFCS400-10-F-3 | 3/8" | 6000 | 166.05 |
| KFCS400-15-F-3 | 1/2" | 6000 | 174.35 |



600 serie FR+L - automatische aftap - met montagebeugel en 10 bar manometer - BSP

| 0338 | BSPP | LPM | € |
|------------------|------|------|--------|
| KFCS600-20-A-F-3 | 3/4" | 9000 | 387.45 |
| KFCS600-25-A-F-3 | 1" | 9000 | 406.70 |

600 serie FR+L - semi-automatische aftap - met montagebeugel en 10 bar manometer - BSP

| 0338 | BSPP | LPM | € |
|----------------|------|------|--------|
| KFCS600-20-F-3 | 3/4" | 9000 | 302.05 |
| KFCS600-25-F-3 | 1" | 9000 | 317.15 |



Persluchtverzorging

TECH DATA
3062

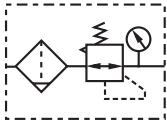
40 micron, standaard
Semi-automatische aftap en automatische aftap verkrijgbaar
Reservoir met beschermkap in serie 300 & 400
Automatische aftap is niet verkrijgbaar in de 200 serie
Bereik: 1,5 tot 9,0 bar

Temperatuur:
-5°C tot +60°C

Maximale druk:
10 bar

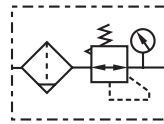


Filter/regelaars



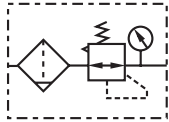
200 serie - semi-automatische aftap - met montagebeugel en 10 bar manometer - BSP

| 0338 | BSPP | LPM | € |
|----------------|------|------|-------|
| KFRS200-06-F-3 | 1/8" | 3000 | 53.45 |
| KFRS200-08-F-3 | 1/4" | 3000 | 56.15 |



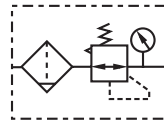
400 serie - automatische aftap - met montagebeugel en 10 bar manometer - BSP

| 0338 | BSPP | LPM | € |
|------------------|------|------|--------|
| KFRS400-10-A-F-3 | 3/8" | 6000 | 143.75 |
| KFRS400-15-A-F-3 | 1/2" | 6000 | 150.95 |



300 serie - automatische aftap - met montagebeugel en 10 bar manometer - BSP

| 0338 | BSPP | LPM | € |
|------------------|------|------|--------|
| KFRS300-08-A-F-3 | 1/4" | 4000 | 99.15 |
| KFRS300-10-A-F-3 | 3/8" | 4000 | 104.20 |
| KFRS300-15-A-F-3 | 1/2" | 4000 | 109.30 |



600 serie - automatische aftap - met montagebeugel en 10 bar manometer - BSP

| 0338 | BSPP | LPM | € |
|------------------|------|------|--------|
| KFRS600-20-A-F-3 | 3/4" | 9000 | 271.30 |
| KFRS600-25-A-F-3 | 1" | 9000 | 284.85 |

300 serie - semi-automatische aftap - met montagebeugel en 10 bar manometer - BSP

| 0338 | BSPP | LPM | € |
|----------------|------|------|-------|
| KFRS300-08-F-3 | 1/4" | 4000 | 62.80 |
| KFRS300-10-F-3 | 3/8" | 4000 | 65.85 |
| KFRS300-15-F-3 | 1/2" | 4000 | 69.15 |

600 serie - semi-automatische aftap - met montagebeugel en 10 bar manometer - BSP

| 0338 | BSPP | LPM | € |
|----------------|------|------|--------|
| KFRS600-20-F-3 | 3/4" | 9000 | 203.50 |
| KFRS600-25-F-3 | 1" | 9000 | 213.65 |

Persluchtverzorging

TECH DATA
3064

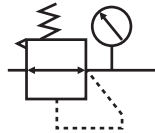
Bereik: 1,5 tot 9,0 bar

Temperatuur:
-5°C tot +60°C

Maximale druk:
10 bar

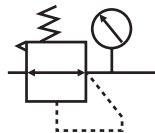


Drukregelaars



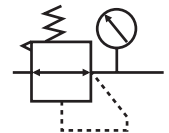
200 serie - met montagebeugel
en 10 bar manometer - BSP

| 0338 | BSPP | LPM | € |
|---------------|------|------|-------|
| KRS200-06-F-3 | 1/8" | 3000 | 44.05 |
| KRS200-08-F-3 | 1/4" | 3000 | 46.25 |



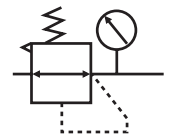
300 serie - met montagebeugel
en 10 bar manometer - BSP

| 0338 | BSPP | LPM | € |
|---------------|------|------|-------|
| KRS300-08-F-3 | 1/4" | 5000 | 52.25 |
| KRS300-10-F-3 | 3/8" | 5000 | 54.80 |
| KRS300-15-F-3 | 1/2" | 5000 | 57.60 |



400 serie - met montagebeugel
en 10 bar manometer - BSP

| 0338 | BSPP | LPM | € |
|---------------|------|------|-------|
| KRS400-10-F-3 | 3/8" | 7500 | 77.30 |
| KRS400-15-F-3 | 1/2" | 7500 | 81.15 |

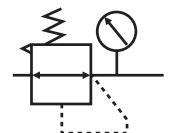


600 serie - met montagebeugel
en 10 bar manometer - BSP

| 0338 | BSPP | LPM | € |
|---------------|------|------|--------|
| KRS600-20-F-3 | 3/4" | 9500 | 109.75 |
| KRS600-25-F-3 | 1" | 9500 | 115.25 |

Max. inlaatdruk: 10 bar
Bereik: 0,5 tot 9,0 bar

TECH DATA
3066



Minidrukregelaar - met montagebeugel
en 10 bar manometer - BSP

| 0338 | BSPP | € |
|-----------|------|-------|
| KRS200-06 | 1/8" | 32.55 |
| KRS200-08 | 1/4" | 34.15 |



Persluchtverzorging

TECH DATA
3065

Reservoir met beschermkap in serie 300 & 400

Temperatuur:

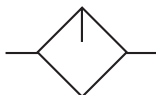
-5°C tot +60°C

Maximale druk:

10 bar



Olienevelaars



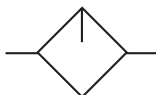
200 serie - met montagebeugel - BSP

| 0338 | BSPP | LPM | € |
|-----------|------|------|-------|
| KLS200-06 | 1/8" | 3000 | 31.20 |
| KLS200-08 | 1/4" | 3000 | 32.70 |



400 serie - met montagebeugel - BSP

| 0338 | BSPP | LPM | € |
|-----------|------|------|-------|
| KLS400-10 | 3/8" | 7500 | 56.95 |
| KLS400-15 | 1/2" | 7500 | 59.75 |



300 serie - met montagebeugel - BSP

| 0338 | BSPP | LPM | € |
|-----------|------|------|-------|
| KLS300-08 | 1/4" | 5000 | 40.30 |
| KLS300-10 | 3/8" | 5000 | 42.25 |
| KLS300-15 | 1/2" | 5000 | 44.40 |



600 serie - met montagebeugel - BSP

| 0338 | BSPP | LPM | € |
|-----------|------|------|--------|
| KLS600-20 | 3/4" | 9000 | 109.75 |
| KLS600-25 | 1" | 9000 | 115.25 |

Persluchtverzorging

TECH DATA
3063

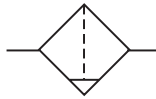
40 micron, standaard
Semi-automatische aftap en automatische aftap verkrijgbaar
Reservoir met beschermkap in serie 300 & 400
Automatische aftap is niet verkrijgbaar in de 200 serie

Temperatuur:
-5°C tot +60°C

Maximale druk:
10 bar

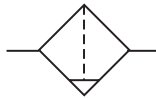


Filters



200 serie - semi-automatische aftap - met montagebeugel - BSP

| 0338 | BSPP | LPM | € |
|-----------|------|------|-------|
| KFS200-06 | 1/8" | 3000 | 28.80 |
| KFS200-08 | 1/4" | 3000 | 30.35 |

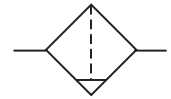


300 serie - automatische aftap - met montagebeugel - BSP

| 0338 | BSPP | LPM | € |
|-------------|------|------|-------|
| KFS300-08-A | 1/4" | 5000 | 68.95 |
| KFS300-10-A | 3/8" | 5000 | 72.35 |
| KFS300-15-A | 1/2" | 5000 | 76.10 |

300 serie - semi-automatische aftap - met montagebeugel - BSP

| 0338 | BSPP | LPM | € |
|-----------|------|------|-------|
| KFS300-08 | 1/4" | 5000 | 38.10 |
| KFS300-10 | 3/8" | 5000 | 40.15 |
| KFS300-15 | 1/2" | 5000 | 42.10 |

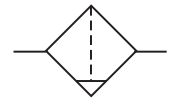


400 serie - automatische aftap - met montagebeugel - BSP

| 0338 | BSPP | LPM | € |
|-------------|------|------|-------|
| KFS400-10-A | 3/8" | 7500 | 93.55 |
| KFS400-15-A | 1/2" | 7500 | 98.15 |

400 serie - semi-automatische aftap - met montagebeugel - BSP

| 0338 | BSPP | LPM | € |
|-----------|------|------|-------|
| KFS400-10 | 3/8" | 7500 | 57.85 |
| KFS400-15 | 1/2" | 7500 | 60.75 |



600 serie - automatische aftap - met montagebeugel - BSP

| 0338 | BSPP | LPM | € |
|-------------|------|-------|--------|
| KFS600-20-A | 3/4" | 10000 | 191.85 |
| KFS600-25-A | 1" | 10000 | 182.75 |

600 serie - semi-automatische aftap - met montagebeugel - BSP

| 0338 | BSPP | LPM | € |
|-----------|------|-------|--------|
| KFS600-20 | 3/4" | 10000 | 139.45 |
| KFS600-25 | 1" | 10000 | 132.75 |





TECH DATA
10286

KELM™ Service Units bestaan uit:

Filter/regelaar, olienevelaar, 3/2 afsluitventiel, montagebeugel en 10 bar manometer.

Semi-automatische aftap en automatische aftap verkrijgbaar.

Temperatuur:

-5°C tot +60°C

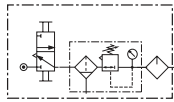
Maximale druk:

10 bar

Service Unit - vloerstatief



Range 1.5 to 9.0 bar



300 serie - automatische aftap - met afsluitventiel en 10 bar manometer - BSP

0338



KCFS300-15-A-F-3

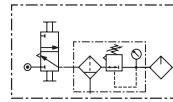
1/2"

4000

279.30



Range 1.5 to 9.0 bar



400 serie - automatische aftap - met afsluitventiel en 10 bar manometer - BSP

0338



KCFS400-15-A-F-3

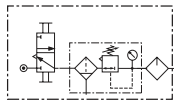
1/2"

6000

378.75



Range 1.5 to 9.0 bar



300 serie - semi-automatische aftap - met afsluitventiel en 10 bar manometer - BSP

0338



KCFS300-15-F-3

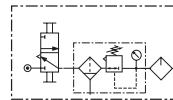
1/2"

4000

245.70



Range 1.5 to 9.0 bar



400 serie - semi-automatische aftap - met afsluitventiel en 10 bar manometer - BSP

0338



KCFS400-15-F-3

1/2"

6000

338.35

Persluchtverzorging

TECH DATA
10286

KELM™ Service Units bestaan uit:

Filter/regelaar, olienevelaar, 3/2 afsluitventiel, montagebeugel en 10 bar manometer.

Semi-automatische aftap en automatische aftap verkrijgbaar.

De units zijn ook verkrijgbaar op vloerstatief voor gebruik met mobiele compressoren op locatie.

Temperatuur:

-5°C tot +60°C

Maximale druk:

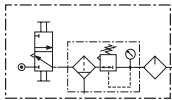
10 bar



Service Unit - wandmontage



Range 1.5 to 9.0 bar

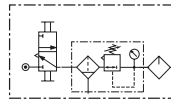


300 serie - automatische aftap - met afsluitventiel en 10 bar manometer - BSP

| | | | |
|------------------|------|------|--------|
| 0338 | | | |
| KCAS300-15-A-F-3 | 1/2" | 4000 | 249.95 |



Range 1.5 to 9.0 bar

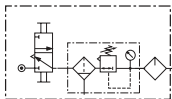


400 serie - automatische aftap - met afsluitventiel en 10 bar manometer - BSP

| | | | |
|------------------|------|------|--------|
| 0338 | | | |
| KCAS400-15-A-F-3 | 1/2" | 6000 | 349.30 |



Range 1.5 to 9.0 bar

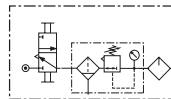


300 serie - semi-automatische aftap - met afsluitventiel en 10 bar manometer - BSP

| | | | |
|----------------|------|------|--------|
| 0338 | | | |
| KCAS300-15-F-3 | 1/2" | 4000 | 216.25 |



Range 1.5 to 9.0 bar



400 serie - semi-automatische aftap - met afsluitventiel en 10 bar manometer - BSP

| | | | |
|----------------|------|------|--------|
| 0338 | | | |
| KCAS400-15-F-3 | 1/2" | 6000 | 308.85 |





Soft Start afsluiters worden steeds vaker gebruikt wanneer veiligheid voorop staat bij het opstarten van machines en systemen, ter bescherming van de operator en de machines.

De afsluiter kan de druk geleidelijk verhogen, tot volledig benodigde flow behaald is bij het opstarten van het systeem.

OSHA gekeurd.

Vergrendelbare afsluitventielen (shut-off) voorkomen dat het systeem opstart als er onderhoud wordt uitgevoerd op de machines.

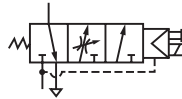
Temperatuur:
-20°C tot +70°C

Maximale druk:
9 bar

TECH DATA
3067

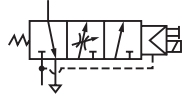
Soft Start ventielen

Deze ventielen zijn geschikt voor gebruik met KELM FRL's, maar zijn ook toepasbaar als stand alone unit.



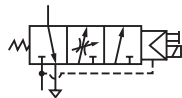
200 serie - 24V DC - met spoel en DIN stekker, montagebeugel en 10 bar manometer - BSP

| 0338 | BSPP | € |
|----------|------|--------|
| KC200-06 | 1/8" | 147.00 |
| KC200-08 | 1/4" | 147.00 |



300 serie - 24V DC - met spoel en DIN stekker, montagebeugel en 10 bar manometer - BSP

| 0338 | BSPP | € |
|----------|------|--------|
| KC300-08 | 1/4" | 163.15 |
| KC300-10 | 3/8" | 163.15 |
| KC300-15 | 1/2" | 163.15 |



400 serie - 24V DC - met spoel en DIN stekker, montagebeugel en 10 bar manometer - BSP

| 0338 | BSPP | € |
|----------|------|--------|
| KC400-10 | 3/8" | 201.25 |
| KC400-15 | 1/2" | 201.25 |

TECH DATA
3068

3/2 afsluitventielen

Deze ventielen zijn geschikt voor gebruik met KELM FRL's, maar zijn ook toepasbaar als stand alone unit.



200 serie - vergrendelbaar - met slot en montagebeugel - BSP

| 0338 | BSPP | € |
|----------|------|-------|
| KZ200-06 | 1/8" | 64.95 |
| KZ200-08 | 1/4" | 64.95 |



300 serie - vergrendelbaar - met slot en montagebeugel - BSP

| 0338 | BSPP | € |
|----------|------|-------|
| KZ300-08 | 1/4" | 76.10 |
| KZ300-10 | 3/8" | 76.10 |
| KZ300-15 | 1/2" | 76.10 |



400 serie - vergrendelbaar - met slot en montagebeugel - BSP

| 0338 | BSPP | € |
|----------|------|--------|
| KZ400-10 | 3/8" | 103.50 |
| KZ400-15 | 1/2" | 103.50 |



Persluchtverzorging

TECH DATA
3069

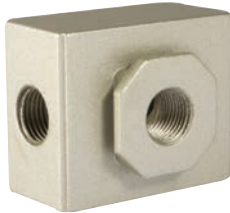
Deze blokken zijn geschikt voor gebruik met KELM FRL's, maar zijn ook toepasbaar als stand alone verdeelblok.

Temperatuur:
-20°C tot +70°C

Maximale druk:
9 bar



Verdeelblokken



200 serie - BSP

| | | |
|-------------|------|--------------|
| 0338 | | |
| KA200-06 | 1/8" | 26.85 |
| KA200-08 | 1/4" | 26.85 |



400 serie - BSP

| | | |
|-------------|------|--------------|
| 0338 | | |
| KA400-10 | 3/8" | 45.95 |
| KA400-15 | 1/2" | 45.95 |



300 serie - BSP

| | | |
|-------------|------|--------------|
| 0338 | | |
| KA300-08 | 1/4" | 38.05 |
| KA300-10 | 3/8" | 38.05 |



600 serie - BSP

| | | |
|-------------|------|---------------|
| 0338 | | |
| KA600-20 | 3/4" | 122.50 |
| KA600-25 | 1" | 122.50 |

Montagebeugels



U-stijl montagebeugel

| | | |
|-------------|-----|--------------|
| 0338 | | |
| KA200U-P1 | 200 | 16.15 |
| KA300U-P1 | 300 | 18.95 |
| KA400U-P1 | 400 | 24.75 |
| KA600U-P1 | 600 | 36.45 |



L-stijl montagebeugel

| | | |
|-------------|-----|--------------|
| 0338 | | |
| KA201-P1 | 200 | 12.05 |
| KA301-P1 | 300 | 14.00 |
| KA401-P1 | 400 | 18.45 |
| KA601-P1 | 600 | 31.55 |



Aftapreservoirs

 TECH DATA
20382


Met automatische aftap

| 0338 | To Suit Unit | € |
|-----------|--------------|-------|
| KF300-P6 | 300 | 28.35 |
| KF400-P10 | 400 | 35.25 |
| KF600-P1 | 600 | 75.80 |



Met semi-automatische aftap

| 0338 | To Suit Unit | € |
|----------|--------------|-------|
| KF200-P3 | 200 | 7.65 |
| KF300-P5 | 300 | 7.30 |
| KF400-P9 | 400 | 13.10 |
| KF600-P2 | 600 | 54.50 |

 TECH DATA
20380


Met handaftap

| 0338 | To Suit Unit | € |
|-----------|--------------|-------|
| KF200-P6 | 200 | 20.55 |
| KF300-P4 | 300 | 7.30 |
| KF400-P11 | 400 | 13.55 |
| KF600-P3 | 600 | 56.70 |

Filterelementen

 TECH DATA
20379


40 µm

| 0338 | To Suit Unit | € |
|-------------|--------------|-------|
| KF200-004-1 | 200 | 3.00 |
| KF300-004-1 | 300 | 7.80 |
| KF400-004-1 | 400 | 12.15 |
| KF600-004-1 | 600 | 46.45 |

5 µm

| 0338 | To Suit Unit | € |
|-------------|--------------|-------|
| KF200-004-2 | 200 | 1.05 |
| KF300-004-2 | 300 | 2.25 |
| KF400-004-2 | 400 | 3.10 |
| KF600-004-2 | 600 | 47.30 |

Micromanometer

 TECH DATA
20381


Manometer - 10 bar

| 0338 | € |
|-------------|-------|
| K-PRO10B-P1 | 22.15 |



Bevestigingsbeugel

| 0338 | | | € |
|---------|------|--------------------|------|
| KGA-1/8 | 1/8" | Voor serie 200-300 | 2.50 |
| KGA-1/4 | 1/4" | Voor serie 400-600 | 6.00 |

Manometer

Manometer - 10 bar - 1/8" BSPT
achteraansluiting - stalen kast

| 0338 | | | | | € |
|----------|------|----|-------|------|------|
| KG40-10R | 1/8" | 40 | 0-160 | 0-10 | 6.30 |
| KG50-10R | 1/8" | 50 | 0-160 | 0-10 | 7.45 |



Paneelmontage bevestigingsbeugel

| 0338 | To Suit mm | € |
|---------|------------|------|
| KPMB40R | 40 | 2.25 |
| KPMB50R | 50 | 2.50 |

MKII PROFESSIONELE METALEN PERSLUCHTVERZORGING

Temperatuur:
-10°C tot +60°C

Maximale werkdruk:

10 bar

Regeldruk:

1.5 - 8.5 bar



Fabrikanten streven voortdurend naar kwaliteitshandhaving en productverbetering; vanwege het succes van de professionele range FM metalen persluchtverzorging is deze vernieuwd.

Verbeteringen aan de constructie van het drukregelaarmechanisme zorgt voor extra sensitiviteit bij het regelen en zorgt ervoor dat het systeem werkt op de meest optimale druk.

- Heavy duty metalen constructie
- 20 micron filterelement
- Modulair compact design
- Semi-automatische aftap
- Aftapreservoir met bescherming bij FM3000, FM4000 en FM5000 eenheden

Filter + drukregelaar + olienevelaar

TECH DATA
60527



F+R+L - semi-automatische aftap - 20 µm - met montagebeugel en 10 bar manometer - BSP

| 0132 | | | |
|-------------|------|------|---------------|
| FM2-20-01-C | 1/8" | 500 | 66.55 |
| FM2-30-02-C | 1/4" | 2000 | 110.85 |
| FM2-40-03-C | 3/8" | 4000 | 147.40 |
| FM2-40-04-C | 1/2" | 4000 | 148.90 |
| FM2-50-06-C | 3/4" | 5000 | 160.80 |
| FM2-50-10-C | 1" | 5000 | 160.80 |

Filter/regelaar + olienevelaar

TECH DATA
60528



FR+L - semi-automatische aftap - 20 µm - met montagebeugel en 10 bar manometer - BSP

| 0132 | | | |
|-------------|------|------|---------------|
| FM2-21-01-C | 1/8" | 500 | 56.45 |
| FM2-31-02-C | 1/4" | 2000 | 86.55 |
| FM2-41-03-C | 3/8" | 4000 | 120.00 |
| FM2-41-04-C | 1/2" | 4000 | 121.50 |
| FM2-51-06-C | 3/4" | 5000 | 147.05 |
| FM2-51-10-C | 1" | 5000 | 149.00 |

Filter/regelaars

TECH DATA
60529



Semi-automatische aftap - 20 µm - met montagebeugel en 10 bar manometer - BSP

| 0132 | | | |
|-------------|------|------|--------------|
| FM2-20-01-W | 1/8" | 500 | 39.55 |
| FM2-30-02-W | 1/4" | 1700 | 50.15 |
| FM2-40-03-W | 3/8" | 3000 | 78.85 |
| FM2-40-04-W | 1/2" | 3000 | 80.50 |
| FM2-50-06-W | 3/4" | 5000 | 86.40 |
| FM2-50-10-W | 1" | 5000 | 86.40 |

Filters

TECH DATA
60530



Semi-automatische aftap - 20 µm - exclusief montagebeugel - BSP

| 0132 | | | |
|-------------|------|------|--------------|
| FM2-20-01-F | 1/8" | 500 | 23.40 |
| FM2-30-02-F | 1/4" | 1700 | 30.65 |
| FM2-40-03-F | 3/8" | 3000 | 39.55 |
| FM2-40-04-F | 1/2" | 3000 | 40.95 |
| FM2-50-06-F | 3/4" | 5000 | 50.70 |
| FM2-50-10-F | 1" | 5000 | 50.70 |

Drukregelaars

TECH DATA
60531



Met montagebeugel en 10 bar manometer - BSP

| 0132 | | | |
|-------------|------|------|--------------|
| FM2-20-01-R | 1/8" | 500 | 39.65 |
| FM2-30-02-R | 1/4" | 1700 | 40.90 |
| FM2-40-03-R | 3/8" | 3000 | 57.70 |
| FM2-40-04-R | 1/2" | 3000 | 59.25 |
| FM2-50-06-R | 3/4" | 5000 | 54.20 |
| FM2-50-10-R | 1" | 5000 | 54.20 |

Olienevelaars

TECH DATA
60532



Exclusief montagebeugel - BSP

| 0132 | | | |
|-------------|------|------|--------------|
| FM2-20-01-L | 1/8" | 500 | 19.80 |
| FM2-30-02-L | 1/4" | 1700 | 30.65 |
| FM2-40-03-L | 3/8" | 3000 | 39.55 |
| FM2-40-04-L | 1/2" | 3000 | 40.95 |
| FM2-50-06-L | 3/4" | 5000 | 49.35 |
| FM2-50-10-L | 1" | 5000 | 49.35 |

MKII PROFESSIONELE METALEN PERSLUCHTVERZORGING

Net als bij de originele range professionele metalen persluchtverzorging zal de MKII range geheel geassembleerd geleverd worden. We bieden de mogelijkheid om afwijkende eenheden samen te stellen door middel van diverse accessoires.

Toepassingen:

- Bouw
- Landbouw
- Mijnbouw
- OEM machinebouw
- Automotive
- Industrie



TECH DATA
60537

Montagebeugels



Wandmontagebeugel

| 0132 | To Suit | € |
|----------|---------|------|
| FM2-20-N | 1/8" | 1.50 |
| FM2-30-N | 1/4" | 1.70 |
| FM2-40-N | 3/8"-1" | 2.10 |



Montagebeugel inclusief wandmontage

| 0132 | To Suit | € |
|-----------|-----------|-------|
| FM2-20-MB | 1/8" | 4.10 |
| FM2-30-MB | 1/4" | 5.80 |
| FM2-40-MB | 3/8"-1/2" | 6.45 |
| FM2-50-MB | 3/4"-1" | 10.30 |

Filterelementen



20 µm

| 0132 | To Suit | € |
|-------------|--------------|------|
| FM2-20-20UM | FM2-20 serie | 2.85 |
| FM2-30-20UM | FM2-30 serie | 3.40 |
| FM2-40-20UM | FM2-40 serie | 6.10 |
| FM2-50-20UM | FM2-50 serie | 6.45 |

Manometers



Micromanometer

| 0132 | To Suit | € |
|-------|------------|------|
| GM-27 | Alle serie | 8.20 |



Stalen manometer

| 0132 | mm | PSI | bar | € | |
|-------|------|-----|-------|------|------|
| GS-40 | 1/8" | 40 | 0-145 | 0-10 | 6.30 |
| GS-50 | 1/8" | 50 | 0-145 | 0-10 | 6.95 |

Aircomp modulair luchtconditioneringssysteem van hoogwaardige industriële kwaliteit

Europese productie met jarenlange
kwaliteitsgarantie

Aircomp drukregelaars, filters, olienevelaars, slowstarters

Toepassingen: Alle persluchtinstallaties tot een maximale flow van 10000 liter per minuut. Jarenlang met groot succes toegepast in alle takken van de industrie, waaronder de automotive en de bouw.

Normering: Filters: ISO 5782-1
Olienevelaars: ISO 6301-1
Drukregelaars: ISO 6953-1

Materiaal: Huis: Slagvaste High/Tech.
technopolymeer
Klep: Messing MS-58
Schroefdraad: Messing MS-58

Drukregelaars: Bereik: afhankelijk van de veer - veer is uitneembaar en te vervangen.
Levering met bereik van: 0-2, 0-4, 0-8 (meest verkocht) en 0-12 bar.

Drukregelaars voor perslucht: gebruik een membraan met ontluchting.
Drukregelaars voor vloeistoffen: gebruik een membraan zonder ontluchting.

Filters: Filters zijn standaard 20 µM.
Voor 0,1 (coalescing) en 5 µM filterelementen: zie accessoires.

Olienevelaars: Minimale werkdruk: 3 bar. Flow variërend van 500 tot 15000 liter, afhankelijk van de serie.

Plaats om interne vervuiling te voorkomen voor drukregelaars of olienevelaars altijd een filter.

Temperatuur: 5°C tot 50°C

Maximale werkdruk: 0 tot 12 bar

Maximale voordruk: 1/4" 16 bar
3/8"-1" 12,5 bar



Components for compressed air



Drukregelaars - micro membraan

TECH DATA
30122

Hoogte: 61mm


 Serie 035 - 1/8" - modulair -
 zeer compact

| FRL | Pressure | Flow | Price | |
|----------|----------|------|-------|-------|
| 53100610 | 1/8" | 0-8 | 250 | 26.10 |

TECH DATA
30124

Hoogte: 86,1mm



Serie 039 - 1/8" - niet modulair - precisie

| FRL | Pressure | Flow | Price | |
|----------|----------|------|-------|-------|
| 55100210 | 1/8" | 0-2 | 900 | 28.20 |
| 55100410 | 1/8" | 0-4 | 900 | 28.20 |
| 55100810 | 1/8" | 0-8 | 900 | 26.90 |
| 55101210 | 1/8" | 0-12 | 900 | 28.20 |

Serie 039 - 1/4" - niet modulair - precisie

| FRL | Pressure | Flow | Price | |
|----------|----------|------|-------|-------|
| 55100213 | 1/4" | 0-2 | 900 | 28.20 |
| 55100413 | 1/4" | 0-4 | 900 | 28.20 |
| 55100813 | 1/4" | 0-8 | 900 | 26.90 |
| 55101213 | 1/4" | 0-12 | 900 | 28.20 |

TECH DATA
30124

Hoogte: 86,1mm


 Serie 039 - 1/8" - niet modulair -
 precisie - ontluchting

| FRL | Pressure | Flow | Price | |
|----------|----------|------|-------|-------|
| 54130210 | 1/8" | 0-2 | 900 | 37.20 |
| 54130410 | 1/8" | 0-4 | 900 | 37.20 |
| 54130810 | 1/8" | 0-8 | 900 | 37.20 |
| 54131210 | 1/8" | 0-12 | 900 | 37.20 |

 Serie 039 - 1/8" - niet modulair -
 precisie - snelontluchting

| FRL | Pressure | Flow | Price | |
|----------|----------|------|-------|-------|
| 55130210 | 1/8" | 0-2 | 900 | 38.35 |
| 55130410 | 1/8" | 0-4 | 900 | 38.35 |
| 55130810 | 1/8" | 0-8 | 900 | 38.35 |
| 55131210 | 1/8" | 0-12 | 900 | 38.35 |

 Serie 039 - 1/4" - niet modulair -
 precisie - ontluchting

| FRL | Pressure | Flow | Price | |
|----------|----------|------|-------|-------|
| 54130213 | 1/4" | 0-2 | 900 | 37.35 |
| 54130413 | 1/4" | 0-4 | 900 | 37.35 |
| 54130813 | 1/4" | 0-8 | 900 | 37.35 |
| 54131213 | 1/4" | 0-12 | 900 | 37.35 |

 Serie 039 - 1/4" - niet modulair -
 precisie - snelontluchting

| FRL | Pressure | Flow | Price | |
|----------|----------|------|-------|-------|
| 55130213 | 1/4" | 0-2 | 900 | 38.50 |
| 55130413 | 1/4" | 0-4 | 900 | 38.50 |
| 55130813 | 1/4" | 0-8 | 900 | 38.50 |
| 55131213 | 1/4" | 0-12 | 900 | 38.50 |

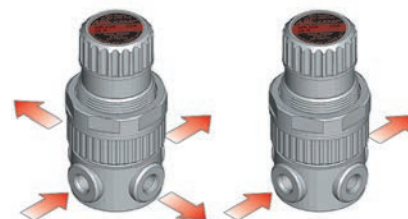
Drukregelaars - micro membraan - chemische resistentie

TECH DATA
30126

Hoogte: 71mm


 Serie 038 - 1/8" - niet modulair -
 2-weg - POM

| FRL | Pressure | Flow | Price | |
|----------|----------|------|-------|-------|
| 54140210 | 1/8" | 0-2 | 360 | 55.30 |
| 54140410 | 1/8" | 0-4 | 360 | 55.30 |
| 54140810 | 1/8" | 0-8 | 360 | 55.30 |
| 54141210 | 1/8" | 0-12 | 360 | 55.30 |


 Serie 038 - 1/8" - niet modulair -
 4-weg - POM

| FRL | Pressure | Flow | Price | |
|----------|----------|------|-------|-------|
| 55140210 | 1/8" | 0-2 | 360 | 55.30 |
| 55140410 | 1/8" | 0-4 | 360 | 55.30 |
| 55140810 | 1/8" | 0-8 | 360 | 55.30 |
| 55141210 | 1/8" | 0-12 | 360 | 55.30 |

Vloeistofdrukregelaars - micro membraan

TECH DATA
30122

Hoogte: 61mm



Serie 035 - 1/8" - modulair

| | | | | |
|----------|------|-----|-----|-------|
| FRL | | | | € |
| 53110610 | 1/8" | 0-6 | 250 | 26.90 |

TECH DATA
30124



Serie 039 - 1/8" - niet modulair - precisie

| | | | |
|----------|------|------|-------|
| FRL | | | € |
| 55110210 | 1/8" | 0-2 | 29.55 |
| 55110410 | 1/8" | 0-4 | 29.55 |
| 55110810 | 1/8" | 0-8 | 28.10 |
| 55111210 | 1/8" | 0-12 | 29.55 |

Serie 039 - 1/4" - niet modulair - precisie

| | | | |
|----------|------|------|-------|
| FRL | | | € |
| 55110213 | 1/4" | 0-2 | 34.30 |
| 55110413 | 1/4" | 0-4 | 34.30 |
| 55110813 | 1/4" | 0-8 | 32.60 |
| 55111213 | 1/4" | 0-12 | 34.30 |

TECH DATA
10469

Deze drukregelaar is ontworpen voor gebruik met voedingsmiddelen en wordt vooral geadviseerd voor waterdrukregeling.

Materiaal : interne delen RVS AISI-316

Media: water en lucht

Hoogte: 86,1mm

Flow:

Lucht: 450 l/min

Water: 6.75 NI/min



Serie 039 - 1/8" - niet modulair - RVS/POM

| | | | |
|--------------|------|------|-------|
| FRL | | | € |
| 039.00.00225 | 1/8" | 0-1 | 87.50 |
| 039.00.00227 | 1/8" | 0-2 | 87.50 |
| 039.00.00228 | 1/8" | 0-4 | 87.50 |
| 039.00.00229 | 1/8" | 0-8 | 87.50 |
| 039.00.00230 | 1/8" | 0-12 | 87.50 |

TECH DATA
60100

Deze drukregelaar is ontworpen voor gebruik met voedingsmiddelen en wordt vooral geadviseerd voor waterdrukregeling.

Materiaal: interne delen messing vernikkeld. De messing delen die in contact komen met vloeistof zijn chemisch vernikkeld en voldoen aan NSF/ANSI51 certificering voor gebruik met voedingsmiddelen.

Media: water en lucht

Hoogte: 86,1mm

Flow:

Lucht: 450 l/min

Water: 6.75 NI/min



Serie 039 - 1/4" - niet modulair - 2-weg - messing vernikkeld/POM

| | | | |
|--------------|------|------|-------|
| FRL | | | € |
| 039.00.00250 | 1/4" | 0-2 | 54.40 |
| 039.00.00251 | 1/4" | 0-4 | 54.40 |
| 039.00.00252 | 1/4" | 0-8 | 54.40 |
| 039.00.00253 | 1/4" | 0-12 | 54.40 |

Serie 039 - 1/4" - niet modulair - 4-weg - messing vernikkeld/POM

| | | | |
|--------------|------|------|-------|
| FRL | | | € |
| 039.00.00246 | 1/4" | 0-2 | 54.40 |
| 039.00.00247 | 1/4" | 0-4 | 54.40 |
| 039.00.00248 | 1/4" | 0-8 | 54.40 |
| 039.00.00249 | 1/4" | 0-12 | 54.40 |



Drukregelaars

TECH DATA
30127



Serie 042 - 1/4" - modulair

| FRL | | | | | | € |
|----------|------|------|----|-----|------|--------------|
| 51100413 | 1/4" | 0-4 | 40 | 102 | 1200 | 36.90 |
| 51100813 | 1/4" | 0-8 | 40 | 102 | 1200 | 34.25 |
| 51101213 | 1/4" | 0-12 | 40 | 102 | 1200 | 36.90 |

TECH DATA
30128



Serie 050 - 3/8" - modulair

| FRL | | | | | | € |
|----------|------|------|----|-----|------|--------------|
| 52100417 | 3/8" | 0-4 | 52 | 134 | 2100 | 54.40 |
| 52100817 | 3/8" | 0-8 | 52 | 134 | 2100 | 51.20 |
| 52101217 | 3/8" | 0-12 | 52 | 134 | 2100 | 54.40 |

TECH DATA
30129



Serie 075 - 1/2" - modulair

| FRL | | | | | | € |
|----------|------|------|----|-----|------|--------------|
| 52100421 | 1/2" | 0-4 | 63 | 145 | 2880 | 72.05 |
| 52100821 | 1/2" | 0-8 | 63 | 145 | 2880 | 68.75 |
| 52101221 | 1/2" | 0-12 | 63 | 145 | 2880 | 72.05 |

TECH DATA
30130



Serie 080 - 3/4" - modulair

| FRL | | | | | | € |
|----------|------|------|----|-----|------|---------------|
| 52100427 | 3/4" | 0-4 | 63 | 145 | 2880 | 109.15 |
| 52100827 | 3/4" | 0-8 | 63 | 145 | 2880 | 109.15 |
| 52101227 | 3/4" | 0-12 | 63 | 145 | 2880 | 109.15 |

TECH DATA
30131



Serie 095 - 1" - modulair

| FRL | | | | | | € |
|----------|----|------|----|-----|-------|---------------|
| 52950432 | 1" | 0-4 | 95 | 222 | 15000 | 267.10 |
| 52950832 | 1" | 0-8 | 95 | 222 | 15000 | 264.25 |
| 52951232 | 1" | 0-12 | 95 | 222 | 15000 | 267.10 |

Voor
manometers



...zie pagina 133

Filters

In deze filters kunnen filterelementen van 5 µm worden geplaatst. Voor losse filterelementen zie pagina 119. Filters met voorgemonteerde filterelementen van 5 µm zijn op aanvraag leverbaar.

TECH DATA
30132



Serie 035 - 1/8" - modulair - 20 µm - zeer compact - transparante bowl

| FRL | | Operation | H mm | FLOW | | € |
|----------|------|-----------|------|------|--------------|-------|
| 53210010 | 1/8" | Handaftap | 79 | 750 | 20SS - lucht | 24.60 |
| 53810010 | 1/8" | Handaftap | - | - | 80SS - water | 24.60 |

TECH DATA
30133



Serie 042 - 1/4" - modulair - 20 µm

| FRL | | Operation | L mm | H mm | FLOW | € |
|----------|------|-------------------|------|------|------|-------|
| 51214013 | 1/4" | Semi-automatische | 40 | 131 | 1250 | 37.70 |
| 51234013 | 1/4" | Automatische | 40 | 131 | 1250 | 86.05 |

TECH DATA
30133



Serie 042 - 1/4" - modulair - 20µm - compacte transparante bowl

| FRL | | Operation | L mm | H mm | FLOW | € |
|--------------|------|-------------------|------|------|------|-------|
| 042.02.00110 | 1/4" | Semi-automatische | 40 | 128 | 1250 | 29.25 |

TECH DATA
30134



Serie 050 - 3/8" - modulair - 20 µm

| FRL | | Operation | L mm | H mm | FLOW | € |
|----------|------|-------------------|------|------|------|-------|
| 52215017 | 3/8" | Semi-automatische | 52 | 172 | 2500 | 46.20 |
| 52235017 | 3/8" | Automatische | 52 | 172 | 2500 | 94.60 |

TECH DATA
30135



Serie 075 - 1/2" - modulair - 20 µm

| FRL | | Operation | L mm | H mm | FLOW | € |
|----------|------|-------------------|------|------|------|--------|
| 52217521 | 1/2" | Semi-automatische | 63 | 204 | 3110 | 64.25 |
| 52237521 | 1/2" | Automatische | 63 | 204 | 3110 | 112.80 |

TECH DATA
30136



Serie 080 - 3/4" - modulair - 20 µm

| FRL | | Operation | L mm | H mm | FLOW | € |
|----------|------|-------------------|------|------|------|--------|
| 52217527 | 3/4" | Semi-automatische | 63 | 204 | 3110 | 97.90 |
| 52237527 | 3/4" | Automatische | 63 | 204 | 3110 | 142.40 |

TECH DATA
30137



Serie 095 - 1" - modulair - 20 µm

| FRL | | Operation | L mm | H mm | FLOW | € |
|----------|----|-------------------|------|------|-------|--------|
| 52219532 | 1" | Semi-automatische | 95 | 285 | 13800 | 184.75 |
| 52239532 | 1" | Automatische | 95 | 285 | 13800 | 233.25 |



Actief koolfilters

TECH DATA
60002



Serie 042 - 1/4" - modulair

| | | | | | | |
|--------------|------|--------------|---------|---------|------|--------|
| FRL | | Operation | L mm | H mm | FLOW | € |
| 042.02.00302 | 1/4" | Zonder aftap | 42 | 125 | 850 | 100.45 |

TECH DATA
60002



Serie 042 - 1/4" - modulair - compacte transparante bowl

| | | | | | | |
|--------------|------|--------------|---------|---------|------|-------|
| FRL | | Operation | L mm | H mm | FLOW | € |
| 042.02.00301 | 1/4" | Zonder aftap | 42 | 109 | 850 | 94.90 |

TECH DATA
60003



Serie 050 - 3/8" - modulair

| | | | | | | |
|--------------|------|--------------|---------|---------|------|--------|
| FRL | | Operation | L mm | H mm | FLOW | € |
| 050.12.00300 | 3/8" | Zonder aftap | 52 | 153 | 1800 | 136.25 |

TECH DATA
60004



Serie 075 - 1/2" - modulair

| | | | | | | |
|--------------|------|--------------|---------|---------|------|--------|
| FRL | | Operation | L mm | H mm | FLOW | € |
| 075.12.00300 | 1/2" | Zonder aftap | 63 | 185 | 2000 | 145.80 |

TECH DATA
30138



Actief koolfilterelement

| FRL | Series | € |
|--------------|--------|-------|
| A42.02.00009 | 042 | 63.95 |
| A50.02.00009 | 050 | 69.50 |
| A75.02.00036 | 075 | 76.90 |

Persluchtverzorging - kunststof

Olienevelaars

TECH DATA
30139



Serie 042 - 1/4" - modulair

| | | | | | |
|----------|---------|----|-----|------|-------|
| FRL | | | | | € |
| 51314013 | 1/4"-PE | 40 | 137 | 2060 | 35.85 |

Serie 042 - 1/4" - modulair - automatisch bijvullen

| | | | | | |
|----------|-----------|----|-----|------|-------|
| FRL | | | | | € |
| 51344013 | 1/4"-PEVL | 40 | 154 | 2060 | 76.30 |

TECH DATA
30139



Serie 042 - 1/4" - modulair - compacte transparante bowl

| | | | | | |
|--------------|------|----|-----|------|-------|
| FRL | | | | | € |
| 042.03.00078 | 1/4" | 40 | 141 | 2060 | 34.05 |

TECH DATA
30140



Serie 050 - 3/8" - modulair

| | | | | | |
|----------|---------|----|-----|------|-------|
| FRL | | | | | € |
| 52315017 | 3/8"-PE | 52 | 190 | 2060 | 48.15 |

Serie 050 - 3/8" - modulair - automatisch bijvullen

| | | | | | |
|----------|-----------|----|-----|------|-------|
| FRL | | | | | € |
| 52345017 | 3/8"-PEVL | 52 | 207 | 2060 | 94.75 |

TECH DATA
30142



Serie 075 - 1/2" - modulair

| | | | | | |
|----------|---------|----|-----|------|-------|
| FRL | | | | | € |
| 52317521 | 1/2"-PE | 63 | 227 | 3500 | 62.45 |

Serie 075 - 1/2" - modulair - automatisch bijvullen

| | | | | | |
|----------|-----------|----|-----|------|--------|
| FRL | | | | | € |
| 52347521 | 1/2"-PEVL | 63 | 244 | 3500 | 110.55 |

TECH DATA
30144



Serie 080 - 3/4" - modulair

| | | | | | |
|----------|---------|----|-----|------|--------|
| FRL | | | | | € |
| 52317527 | 3/4"-PE | 63 | 227 | 3550 | 106.55 |

Serie 080 - 3/4" - modulair - automatisch bijvullen

| | | | | | |
|----------|-----------|----|-----|------|--------|
| FRL | | | | | € |
| 52347527 | 3/4"-PEVL | 63 | 244 | 3550 | 156.80 |

TECH DATA
30146



Serie 095 - 1" - modulair

| | | | | | |
|----------|-------|----|-----|-------|--------|
| FRL | | | | | € |
| 52319532 | 1"-PE | 95 | 300 | 15000 | 167.15 |



In deze filter/regelaars kunnen ook filterelementen van 5 µM worden geplaatst. Voor losse filterelementen zie pagina 119. Filters met voorgemonteerde elementen van 5 µM en 0,1 µM (coalescing) zijn op aanvraag leverbaar.

Filter/regelaars

TECH DATA
30147



Serie 042 - 1/4" - 20 µm

| FRL | | | Operation | H mm | FLOW | € |
|----------|------|------|-------------------|------|------|--------------|
| 51410413 | 1/4" | 0-4 | Semi-automatische | 207 | 1200 | 55.40 |
| 51410813 | 1/4" | 0-8 | Semi-automatische | 207 | 1200 | 52.45 |
| 51411213 | 1/4" | 0-12 | Semi-automatische | 207 | 1200 | 55.25 |
| 51430413 | 1/4" | 0-4 | Automatische | 207 | 1200 | 98.85 |
| 51430813 | 1/4" | 0-8 | Automatische | 207 | 1200 | 95.80 |
| 51431213 | 1/4" | 0-12 | Automatische | 207 | 1200 | 98.50 |

TECH DATA
30147



Serie 042 - 1/4" - 20 µm - compacte transparante bowl

| FRL | | | Operation | H mm | FLOW | € |
|--------------|------|-----|-------------------|------|------|--------------|
| 042.04.00133 | 1/4" | 0-8 | Semi-automatische | 188 | 1200 | 45.30 |

TECH DATA
30148



Serie 050 - 3/8" - 20 µm

| FRL | | | Operation | H mm | FLOW | € |
|----------|------|------|-------------------|------|------|---------------|
| 52410417 | 3/8" | 0-4 | Semi-automatische | 242 | 2100 | 77.25 |
| 52410817 | 3/8" | 0-8 | Semi-automatische | 242 | 2100 | 73.75 |
| 52411217 | 3/8" | 0-12 | Semi-automatische | 242 | 2100 | 77.00 |
| 52430417 | 3/8" | 0-4 | Automatische | 242 | 2100 | 120.70 |
| 52430817 | 3/8" | 0-8 | Automatische | 242 | 2100 | 117.00 |
| 52431217 | 3/8" | 0-12 | Automatische | 242 | 2100 | 120.20 |

TECH DATA
30149



Serie 075 - 1/2" - 20 µm

| FRL | | | Operation | H mm | FLOW | € |
|----------|------|------|-------------------|------|------|---------------|
| 52410421 | 1/2" | 0-4 | Semi-automatische | 276 | 2880 | 102.20 |
| 52410821 | 1/2" | 0-8 | Semi-automatische | 276 | 2880 | 98.80 |
| 52411221 | 1/2" | 0-12 | Semi-automatische | 276 | 2880 | 101.85 |
| 52430421 | 1/2" | 0-4 | Automatische | 276 | 2880 | 145.50 |
| 52430821 | 1/2" | 0-8 | Automatische | 276 | 2880 | 141.90 |
| 52431221 | 1/2" | 0-12 | Automatische | 276 | 2880 | 145.10 |

TECH DATA
30150



Serie 080 - 3/4" - 20 µm

| FRL | | | Operation | H mm | FLOW | € |
|----------|------|------|-------------------|------|------|---------------|
| 52410427 | 3/4" | 0-4 | Semi-automatische | 276 | 2880 | 139.10 |
| 52410827 | 3/4" | 0-8 | Semi-automatische | 276 | 2880 | 134.95 |
| 52411227 | 3/4" | 0-12 | Semi-automatische | 276 | 2880 | 139.10 |
| 52430427 | 3/4" | 0-4 | Automatische | 276 | 2880 | 182.30 |
| 52430827 | 3/4" | 0-8 | Automatische | 276 | 2880 | 178.35 |
| 52431227 | 3/4" | 0-12 | Automatische | 276 | 2880 | 182.30 |

TECH DATA
30151



Serie 095 - 1" - 20 µm

| FRL | | | Operation | H mm | FLOW | € |
|----------|----|------|-------------------|------|-------|---------------|
| 52410432 | 1" | 0-4 | Semi-automatische | 411 | 13800 | 338.50 |
| 52410832 | 1" | 0-8 | Semi-automatische | 411 | 13800 | 324.85 |
| 52411232 | 1" | 0-12 | Semi-automatische | 411 | 13800 | 337.40 |
| 52430432 | 1" | 0-4 | Automatische | 411 | 13800 | 394.50 |
| 52430832 | 1" | 0-8 | Automatische | 411 | 13800 | 362.25 |
| 52431232 | 1" | 0-12 | Automatische | 411 | 13800 | 393.15 |

Filter/regelaar + olienevelaar

TECH DATA
30152



Serie 042 - FR+L - 1/4" - modulair - 20 µm

| FRL | | | Operation | H mm | FLOW | € |
|----------|------|------|-------------------|------|------|---------------|
| 51710413 | 1/4" | 0-4 | Semi-automatische | 207 | 980 | 99.90 |
| 51710813 | 1/4" | 0-8 | Semi-automatische | 207 | 980 | 96.20 |
| 51711213 | 1/4" | 0-12 | Semi-automatische | 207 | 980 | 98.80 |
| 51730413 | 1/4" | 0-4 | Automatische | 207 | 980 | 143.15 |
| 51730813 | 1/4" | 0-8 | Automatische | 207 | 980 | 140.40 |
| 51731213 | 1/4" | 0-12 | Automatische | 207 | 980 | 145.30 |

TECH DATA
30153

Serie 050 - FR+L - 3/8" - modulair - 20 µm

| FRL | | | Operation | H mm | FLOW | € |
|----------|------|------|-------------------|------|------|---------------|
| 52710417 | 3/8" | 0-4 | Semi-automatische | 242 | 1500 | 136.25 |
| 52710817 | 3/8" | 0-8 | Semi-automatische | 242 | 1500 | 127.75 |
| 52711217 | 3/8" | 0-12 | Semi-automatische | 242 | 1500 | 130.95 |
| 52730417 | 3/8" | 0-4 | Automatische | 242 | 1500 | 174.00 |
| 52730817 | 3/8" | 0-8 | Automatische | 242 | 1500 | 170.95 |
| 52731217 | 3/8" | 0-12 | Automatische | 242 | 1500 | 174.25 |

TECH DATA
30152



Serie 042 - FR+L - 1/4" - modulair - 20 µm - compacte transparante bowl

| FRL | | | Operation | H mm | FLOW | € |
|--------------|------|-----|-------------------|------|------|--------------|
| 042.06.00124 | 1/4" | 0-8 | Semi-automatische | 188 | 980 | 81.85 |

TECH DATA
30154



Serie 075 - FR+L - 1/2" - modulair - 20 µm

| FRL | | | Operation | H mm | FLOW | € |
|----------|------|------|-------------------|------|------|---------------|
| 52710421 | 1/2" | 0-4 | Semi-automatische | 276 | 2200 | 173.35 |
| 52710821 | 1/2" | 0-8 | Semi-automatische | 276 | 2200 | 166.85 |
| 52711221 | 1/2" | 0-12 | Semi-automatische | 276 | 2200 | 170.30 |
| 52730421 | 1/2" | 0-4 | Automatische | 276 | 2200 | 217.10 |
| 52730821 | 1/2" | 0-8 | Automatische | 276 | 2200 | 210.15 |
| 52731221 | 1/2" | 0-12 | Automatische | 276 | 2200 | 213.60 |

TECH DATA
30155

Serie 080 - FR+L - 3/4" - modulair - 20 µm

| FRL | | | Operation | H mm | FLOW | € |
|----------|------|------|-------------------|------|------|---------------|
| 52710427 | 3/4" | 0-4 | Semi-automatische | 276 | 2200 | 258.75 |
| 52710827 | 3/4" | 0-8 | Semi-automatische | 276 | 2200 | 250.25 |
| 52711227 | 3/4" | 0-12 | Semi-automatische | 276 | 2200 | 257.95 |
| 52730427 | 3/4" | 0-4 | Automatische | 276 | 2200 | 289.85 |
| 52730827 | 3/4" | 0-8 | Automatische | 276 | 2200 | 295.60 |
| 52731227 | 3/4" | 0-12 | Automatische | 276 | 2200 | 298.55 |

TECH DATA
30156

Serie 095 - FR+L - 1" - modulair - 20 µm





| FRL | | | Operation | H mm | FLOW | € |
|----------|----|------|-------------------|------|------|---------------|
| 52710432 | 1" | 0-4 | Semi-automatische | 411 | 8000 | 556.10 |
| 52710832 | 1" | 0-8 | Semi-automatische | 411 | 8000 | 525.90 |
| 52711232 | 1" | 0-12 | Semi-automatische | 411 | 8000 | 541.90 |
| 52730432 | 1" | 0-4 | Automatische | 411 | 8000 | 613.95 |
| 52730832 | 1" | 0-8 | Automatische | 411 | 8000 | 569.20 |
| 52731232 | 1" | 0-12 | Automatische | 411 | 8000 | 585.15 |



Filter + regelaar + olienevelaar





 TECH DATA
30157


Serie 042 - F+R+L - 1/4" - modulair - 20 µm

| FRL |  |  | Operation |  |  | € |
|----------|---|---|-------------------|---|---|---------------|
| 51610413 | 1/4" | 0-4 | Semi-automatische | 207 | 980 | 113.10 |
| 51610813 | 1/4" | 0-8 | Semi-automatische | 207 | 980 | 116.10 |
| 51621213 | 1/4" | 0-12 | Semi-automatische | 207 | 980 | 114.80 |
| 51630413 | 1/4" | 0-4 | Automatische | 207 | 980 | 157.60 |
| 51630813 | 1/4" | 0-8 | Automatische | 207 | 980 | 159.30 |
| 51611213 | 1/4" | 0-12 | Automatische | 207 | 980 | 165.85 |





 TECH DATA
30158

Serie 050 - F+R+L - 3/8" - modulair - 20 µm

| FRL |  |  | Operation |  |  | € |
|----------|---|---|-------------------|---|---|---------------|
| 52610417 | 3/8" | 0-4 | Semi-automatische | 242 | 1300 | 161.65 |
| 52610817 | 3/8" | 0-8 | Semi-automatische | 242 | 1300 | 151.50 |
| 52611217 | 3/8" | 0-12 | Semi-automatische | 242 | 1300 | 158.25 |
| 52630417 | 3/8" | 0-4 | Automatische | 242 | 1300 | 207.35 |
| 52630817 | 3/8" | 0-8 | Automatische | 242 | 1300 | 194.55 |
| 52631217 | 3/8" | 0-12 | Automatische | 242 | 1300 | 202.55 |





 TECH DATA
30157


Serie 042 - F+R+L - 1/4" - modulair - 20µm - compacte transparante bowl

| FRL |  |  | Operation |  |  | € |
|--------------|---|---|-------------------|---|---|---------------|
| 042.05.00170 | 1/4" | 0-8 | Semi-automatische | 188 | 980 | 100.75 |





 TECH DATA
30159


Serie 075 - F+R+L - 1/2" - modulair - 20 µm

| FRL |  |  | Operation |  |  | € |
|----------|---|---|-------------------|---|---|---------------|
| 52610421 | 1/2" | 0-4 | Semi-automatische | 276 | 2100 | 214.50 |
| 52610821 | 1/2" | 0-8 | Semi-automatische | 276 | 2100 | 203.85 |
| 52611221 | 1/2" | 0-12 | Semi-automatische | 276 | 2100 | 207.25 |
| 52630421 | 1/2" | 0-4 | Automatische | 276 | 2100 | 260.35 |
| 52630821 | 1/2" | 0-8 | Automatische | 276 | 2100 | 242.25 |
| 52631221 | 1/2" | 0-12 | Automatische | 276 | 2100 | 251.50 |





 TECH DATA
30160

Serie 080 - F+R+L - 3/4" - modulair - 20 µm

| FRL |  |  | Operation |  |  | € |
|----------|---|---|-------------------|---|---|---------------|
| 52610427 | 3/4" | 0-4 | Semi-automatische | 276 | 3210 | 335.35 |
| 52610827 | 3/4" | 0-8 | Semi-automatische | 276 | 3210 | 332.00 |
| 52611227 | 3/4" | 0-12 | Semi-automatische | 276 | 3210 | 335.35 |
| 52630427 | 3/4" | 0-4 | Automatische | 276 | 3210 | 381.05 |
| 52630827 | 3/4" | 0-8 | Automatische | 276 | 3210 | 377.70 |
| 52631227 | 3/4" | 0-12 | Automatische | 276 | 3210 | 381.05 |

 TECH DATA
30161

Serie 095 - F+R+L - 1" - modulair - 20 µm

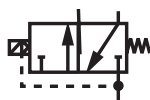
| FRL |  |  | Operation |  |  | € |
|----------|---|---|-------------------|---|---|---------------|
| 52610432 | 1" | 0-4 | Semi-automatische | 411 | 13800 | 686.25 |
| 52610832 | 1" | 0-8 | Semi-automatische | 411 | 13800 | 666.10 |
| 52611232 | 1" | 0-12 | Semi-automatische | 411 | 13800 | 670.95 |
| 52630432 | 1" | 0-4 | Automatische | 411 | 13800 | 730.80 |
| 52630832 | 1" | 0-8 | Automatische | 411 | 13800 | 710.35 |
| 52631232 | 1" | 0-12 | Automatische | 411 | 13800 | 715.15 |

 Voor
manometers


...zie pagina 133

Slow start ventielen

TECH DATA
30162



Serie 042 - 1/4" - modulair

| | | | | | |
|----------|------|----|-----|------|-------|
| FRL | | | | | € |
| 51904013 | 1/4" | 42 | 105 | 1570 | 71.75 |

Serie 050 - 3/8" - modulair

| | | | | | |
|----------|------|----|-----|------|--------|
| FRL | | | | | € |
| 52905017 | 3/8" | 52 | 108 | 2580 | 101.85 |

Serie 075 - 1/2" - modulair

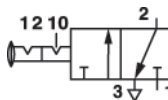
| | | | | | |
|----------|------|----|-----|------|--------|
| FRL | | | | | € |
| 52907521 | 1/2" | 63 | 117 | 3075 | 113.10 |

Serie 080 - 3/4" - modulair

| | | | | | |
|----------|------|----|-----|------|--------|
| FRL | | | | | € |
| 52908027 | 3/4" | 63 | 117 | 3075 | 151.50 |

3/2 afsluitventielen - handbediend

TECH DATA
30163



Serie 042 - 1/4" - modulair - ontluchting bij afsluiten luchttoevoer

| | | | | | |
|----------|------|----|-----|------|-------|
| FRL | | | | | € |
| 52924213 | 1/4" | 42 | 110 | 1570 | 66.55 |

Serie 050 - 3/8" - modulair - ontluchting bij afsluiten luchttoevoer

| | | | | | |
|----------|------|----|-----|------|-------|
| FRL | | | | | € |
| 52925017 | 3/8" | 52 | 121 | 2580 | 85.05 |

Serie 075 - 1/2" - modulair - ontluchting bij afsluiten luchttoevoer

| | | | | | |
|----------|------|----|-----|------|-------|
| FRL | | | | | € |
| 52927521 | 1/2" | 63 | 138 | 3075 | 91.15 |

Serie 080 - 3/4" - modulair - ontluchting bij afsluiten luchttoevoer

| | | | | | |
|----------|------|----|-----|------|--------|
| FRL | | | | | € |
| 52928027 | 3/4" | 63 | 138 | 3075 | 130.60 |

3/2 afsluitventielen - elektrisch

TECH DATA
30164



Serie 042 - 1/4" - modulair - Microsol - ontluchting bij afsluiten luchttoevoer - inclusief spoel en stekker

| | | | | | | |
|----------|---------|------|----|-----|------|--------|
| FRL | | | | | | € |
| 52934225 | 24V-DC | 1/4" | 42 | 143 | 1570 | 120.50 |
| 52934224 | 24V-AC | 1/4" | 42 | 143 | 1570 | 120.50 |
| 52934222 | 220V-AC | 1/4" | 42 | 143 | 1570 | 120.50 |

Serie 050 - 3/8" - modulair - Microsol - ontluchting bij afsluiten luchttoevoer - inclusief spoel en stekker

| | | | | | | |
|-------------|---------|------|----|-----|------|--------|
| FRL | | | | | | € |
| 52935017 | 24V-DC | 3/8" | 52 | 145 | 2580 | 147.10 |
| 52935017AC | 24V-AC | 3/8" | 52 | 145 | 2580 | 147.10 |
| 52935017220 | 220V-AC | 3/8" | 52 | 145 | 2580 | 147.10 |

Serie 075 - 1/2" - modulair - Microsol - ontluchting bij afsluiten luchttoevoer - inclusief spoel en stekker

| | | | | | | |
|-------------|---------|------|----|-----|------|--------|
| FRL | | | | | | € |
| 52937521 | 24V-DC | 1/2" | 63 | 154 | 3075 | 156.00 |
| 52937521AC | 24V-AC | 1/2" | 63 | 154 | 3075 | 156.00 |
| 52937521220 | 220V-AC | 1/2" | 63 | 154 | 3075 | 156.00 |

Serie 080 - 3/4" - modulair - Microsol - ontluchting bij afsluiten luchttoevoer - inclusief spoel en stekker

| | | | | | | |
|-------------|---------|------|----|-----|------|--------|
| FRL | | | | | | € |
| 52938027 | 24V-DC | 3/4" | 63 | 154 | 3075 | 191.70 |
| 52938027AC | 24V-AC | 3/4" | 63 | 154 | 3075 | 191.65 |
| 52938027220 | 220V-AC | 3/4" | 63 | 154 | 3075 | 191.65 |

CNOMO
elektrisch
bediende
ventielen en
pneumatische
ventielen zijn
op aanvraag
leverbaar.



Montagesets



Serie 035 - voor onderlinge koppeling van modules

| FRL | Series | | € |
|----------|--------|----------------|------|
| 56083500 | 035 | Montageset F+R | 2.10 |



56064070

56064200

56064050,
56064080

Serie 042 - voor onderlinge koppeling van modules

| FRL | Series | | € |
|----------|--------|-------------------------------------|------|
| 56064200 | 042 | Montageset voor modulebouw compleet | 7.10 |
| 56064050 | 042 | Montageboutenset FR+L | 2.60 |
| 56064070 | 042 | Montageboutenset F+R+L en V3+FR+L | 5.20 |
| 56064080 | 042 | Montageboutenset F+L | 6.35 |



56085000,
56087500,
56088001,
56089500

56085002,
56087502,
56088000,
56089502

Serie 050 - voor onderlinge koppeling van modules

| FRL | Series | | € |
|----------|--------|------------------------|------|
| 56085002 | 050 | Montageset F+R+L | 9.75 |
| 56085000 | 050 | Montageset FR+L en F+L | 4.90 |

Serie 075 - voor onderlinge koppeling van modules

| FRL | Series | | € |
|----------|--------|------------------------|------|
| 56087502 | 075 | Montageset F+R+L | 9.75 |
| 56087500 | 075 | Montageset FR+L en F+L | 4.90 |

Serie 080 - voor onderlinge koppeling van modules

| FRL | Series | | € |
|----------|--------|------------------------|-------|
| 56088000 | 080 | Montageset F+R+L | 12.20 |
| 56088001 | 080 | Montageset FR+L en F+L | 6.15 |

Serie 095 - voor onderlinge koppeling van modules

| FRL | Series | | € |
|----------|--------|------------------------|-------|
| 56089502 | 095 | Montageset F+R+L | 57.75 |
| 56089500 | 095 | Montageset FR+L en F+L | 28.70 |

Membraan



56143900

Serie 035-095 drukregelaars - met ontluchting voor gebruik met lucht of zonder voor gebruik met vloeistof

| FRL | Series | | € |
|-----------|---------------------|--------------------|-------|
| 56143500 | 035 | met ontluchting | 8.90 |
| 56143900 | 039 | met ontluchting | 10.15 |
| 56144200 | 042 | met ontluchting | 13.75 |
| 56144200N | 039-042 NIEUW MODEL | met ontluchting | 12.10 |
| 56145017 | 050 | met ontluchting | 10.60 |
| 56147521 | 075-080 | met ontluchting | 11.25 |
| 56143501 | 035 | zonder ontluchting | 5.85 |
| 56143901 | 039 | zonder ontluchting | 10.15 |
| 56144201 | 042 | zonder ontluchting | 13.85 |
| 56144201N | 039-042 NIEUW MODEL | zonder ontluchting | 13.30 |

Veren



56175008

Serie 035-095 drukregelaars

| FRL | Series | bar | € |
|-----------|---------------------|------|------|
| 56173506 | 035 | 0-6 | 1.15 |
| 56174002 | 039-042 | 0-2 | 1.70 |
| 56174002N | 039-042 NIEUW MODEL | 0-2 | 2.85 |
| 56174004 | 039-042 | 0-4 | 1.70 |
| 56174004N | 039-042 NIEUW MODEL | 0-4 | 2.85 |
| 56174008 | 039-042 | 0-8 | 1.60 |
| 56174008N | 039-042 NIEUW MODEL | 0-8 | 2.40 |
| 56174012 | 039-042 | 0-12 | 1.70 |
| 56174012N | 039-042 NIEUW MODEL | 0-12 | 2.85 |
| 56175004 | 050 | 0-4 | 2.20 |
| 56175008 | 050 | 0-8 | 2.10 |
| 56175012 | 050 | 0-12 | 2.20 |
| 56177504 | 075-080 | 0-4 | 2.70 |
| 56177508 | 075-080 | 0-8 | 2.70 |
| 56177512 | 075-080 | 0-12 | 2.70 |

Montageset



56124000,
56127500

56124200

56129500,
56129501

Serie 038-042 - wandmontageset

| FRL | Series | | € |
|----------|---------|--|-------|
| 56124000 | 038-042 | Wandmontagebeugel | 3.65 |
| 56124200 | 042 | T-wandmontagebeugel | 4.90 |
| 56127500 | 050-080 | Wandmontagebeugel | 7.20 |
| 56129500 | 095 | Wandmontageset (dubbele unit) | 33.20 |
| 56129501 | 095 | Wandmontageset (F-R-L-FR enkele units) | 24.25 |

Filterelement



5 µm

| FRL | Series | | € |
|----------|-----------|---------------------------|-------|
| 56155000 | 035-5 | Filter | 8.25 |
| 56156001 | 042-5 | Filter | 11.95 |
| 56154205 | 042-5 | Filter/regelaar | 11.95 |
| 56156002 | 050-5 | Filter | 13.20 |
| 56156004 | 050-5 | Filter/regelaar | 17.45 |
| 56156003 | 075-080-5 | Filter | 16.60 |
| 56156005 | 075-080-5 | Filter/regelaar | 21.15 |
| 56156007 | 095-5 | Filter en filter/regelaar | 20.75 |

20 µm

| FRL | Series | | € |
|----------|------------|---------------------------|-------|
| 56156000 | 035-20 | Filter | 7.80 |
| 56155001 | 042-20 | Filter | 11.40 |
| 56154220 | 042-20 | Filter/regelaar | 11.40 |
| 56155002 | 050-20 | Filter | 12.60 |
| 56155004 | 050-20 | Filter/regelaar | 17.10 |
| 56155003 | 075-080-20 | Filter | 15.00 |
| 56155005 | 075-080-20 | Filter/regelaar | 19.45 |
| 56156008 | 095-20 | Filter en filter/regelaar | 20.75 |

80 µm (water)

| FRL | Series | | € |
|----------|--------|--------|------|
| 56156009 | 035 | Filter | 7.85 |

Aftapreservoir



56014000

56017502

Serie 042-095 filters en filter/regelaars

| FRL | Series | | € |
|----------|---------|---------------------------------------|--------|
| 56013500 | 035 | TTSS - helder/semi-automatische | 15.60 |
| 56013501 | 035 | TTSS-WATER - helder/semi-automatische | 13.85 |
| 56014000 | 042 | TTSS - helder/semi-automatische | 13.75 |
| 56014001 | 042 | PESS - beschermd/semi-automatische | 15.00 |
| 56014003 | 042 | TTSA - helder/automatische | 85.85 |
| 56014002 | 042 | PESA - beschermd/automatische | 89.00 |
| 56015001 | 050 | PESS - beschermd/semi-automatische | 19.60 |
| 56015002 | 050 | PESA - beschermd/automatische | 94.40 |
| 56017501 | 075-080 | PESS - beschermd/semi-automatische | 24.35 |
| 56017502 | 075-080 | PESA - beschermd/automatische | 96.55 |
| 56019501 | 095 | PESS - beschermd/semi-automatische | 35.65 |
| 56019502 | 095 | PESA - beschermd/automatische | 111.85 |



56027501

Serie 042-095 olienevelaars

| FRL | Series | | € |
|----------|---------|-------------------------------------|-------|
| 56024000 | 042 | TT - helder | 12.05 |
| 56024001 | 042 | PE - beschermd | 13.85 |
| 56025001 | 050 | PE - beschermd | 16.70 |
| 56025003 | 050 | PE - beschermd - oliepijluitvoering | 55.65 |
| 56027501 | 075-080 | PE - beschermd | 22.35 |
| 56027503 | 075-080 | PE - beschermd - oliepijluitvoering | 64.85 |
| 56019503 | 095 | PE - beschermd | 33.05 |
| 56019504 | 095 | PE - beschermd - oliepijluitvoering | 74.50 |

Automatische aftap



Serie 042-095 filters en filter/regelaars

| FRL | | € |
|----------|------------------------------------|-------|
| 56034075 | Automatische aftap (F-FR) | 46.60 |
| 56030000 | Montagekit voor automatische aftap | 4.30 |

Pluggen 1/8"



Serie 035-039 - prijs en levering per 12 stuks

| FRL | | € |
|----------|----------|------|
| 56101000 | 12 stuks | 8.15 |



| | |
|------------------------------|---|
| Medium: | Perslucht |
| Flow: | Genoemde flow is gemeten bij 6 bar |
| Filtratiegraad: | Standaard 20 µm / coalescing 0,01 µm Op aanvraag 5 en 50 µm leverbaar |
| Regelbereik: | Standaard 0-8 bar Op aanvraag 0-2, 0-4 en 0-12 leverbaar |
| Manometeraansluiting: | 1/8" |
| Materiaal: | Huis, reservoir en aftap: Technopolymeer Schroefdraad: Messing insert Filter cartridge: PE O-ring: NBR Membraan: NBR |

Temperatuur:
-10°C tot +50°C

Maximale werkdruk:
15 bar

Voor accessoires zie pagina 124

Drukregelaar

TECH DATA
60005





T020 - 0-8 bar

| | | | |
|-------------|---|---|---|
| 6835 |  |  |  |
| T02020300 | 1/8" | 600 | 33.20 |
| T02030300 | 1/4" | 600 | 33.20 |

TECH DATA
60006



T070 - 0-8 bar - met snelontluchting

| | | | |
|-------------|---|---|---|
| 6835 |  |  |  |
| T07020300 | 1/8" | 600 | 33.30 |
| T07030300 | 1/4" | 600 | 33.30 |



Waterdrukregelaar

Temperatuur:
5°C tot +50°C

TECH DATA
60007



T080 - 0-8 bar


| | | |
|-------------|---|---|
| 6835 |  |  |
| T08020300 | 1/8" | 33.30 |
| T08030300 | 1/4" | 33.30 |

Filter

TECH DATA
60008



T010 - semi-automatische aftap - 20 µm


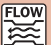
| | | | |
|-------------|---|---|---|
| 6835 |  |  |  |
| T01022010 | 1/8" | 800 | 32.70 |
| T01032010 | 1/4" | 800 | 32.70 |

Actief koelfilter

TECH DATA
60009



T015 - semi-automatische aftap - 0,01 µm

| | | | |
|-------------|---|---|---|
| 6835 |  |  |  |
| T01024010 | 1/8" | 450 | 114.20 |
| T01034010 | 1/4" | 450 | 114.20 |

Temperatuur:
-10°C tot +50°C

Maximale werkdruk:
15 bar

Voor accessoires zie pagina 124

Olienevelaar

TECH DATA
60010



T040

| 6835 | | | € |
|-----------|------|-----|-------|
| T04020001 | 1/8" | 700 | 44.00 |
| T04030001 | 1/4" | 700 | 44.00 |

Filter/regelaar

TECH DATA
60011



T030 - semi-automatische aftap - 20 µm - 0-8 bar

| 6835 | | | € |
|-----------|------|-----|-------|
| T03022310 | 1/8" | 600 | 56.15 |
| T03032310 | 1/4" | 600 | 56.15 |

Filter/regelaar + olienevelaar

TECH DATA
60012



T100 FR+L - semi-automatische aftap - 20 µm - 0-8 bar

| 6835 | | | € |
|-----------|------|-----|--------|
| T10022311 | 1/8" | 260 | 102.25 |
| T10032311 | 1/4" | 260 | 102.25 |

Filter/regelaar + actief koolfilter

TECH DATA
60013



T450 FR+C - semi-automatische aftap - 5 µm/0,01 µm - 0-8 bar

| 6835 | | | € |
|-----------|------|-----|--------|
| T40024010 | 1/8" | 370 | 150.15 |
| T40034010 | 1/4" | 370 | 150.15 |

Filter + regelaar + olienevelaar

TECH DATA
60012



T200 F+R+L - semi-automatische aftap - 20 µm - 0-8 bar

| 6835 | | | € |
|-------------|------|-----|--------|
| T2000022311 | 1/8" | 280 | 111.15 |
| T2000032311 | 1/4" | 280 | 111.15 |



Medium: Perslucht
Flow: Genoemde flow is gemeten bij 6 bar
Filteratiegraad: Standaard 20 µm / coalescing 0,01 µm
 Op aanvraag 5 en 50 µm leverbaar
Regelbereik: Standaard 0-8 bar
 Op aanvraag 0-2, 0-4 en 0-12 leverbaar
Manometeraansluiting: 1/8"
Materiaal: **Huis, reservoir en aftap:** Technopolymeer
Schroefdraad: Messing insert
Filter cartridge: PE
O-ring: NBR
Membraan: NBR

Temperatuur:
 -10°C tot +50°C

Maximale werkdruk:
 15 bar

Drukregelaar

TECH DATA
60014



T020 - 0-8 bar

| 6835 | Series | | | € |
|------------|--------|------|------|--------|
| T020103030 | 1 | 1/4" | 2050 | 55.90 |
| T020104030 | 1 | 3/8" | 2050 | 55.90 |
| T020204030 | 2 | 3/8" | 3200 | 76.90 |
| T020205030 | 2 | 1/2" | 3200 | 76.90 |
| T020307030 | 3 | 3/4" | 6200 | 108.40 |
| T020309030 | 3 | 1" | 6200 | 108.40 |

Actief koelfilter

TECH DATA
60016



T015 - semi-automatische aftap - 0,01 µm

| 6835 | Series | | | € |
|------------|--------|------|-----|--------|
| T015103401 | 1 | 1/4" | 700 | 140.40 |
| T015104401 | 1 | 3/8" | 700 | 140.40 |
| T015204401 | 2 | 3/8" | 725 | 177.00 |
| T015205401 | 2 | 1/2" | 725 | 177.00 |
| T015307401 | 3 | 3/4" | 920 | 211.30 |
| T015309401 | 3 | 1" | 920 | 211.30 |

Filter

TECH DATA
60015



T010 - semi-automatische aftap - 20 µm

| 6835 | Series | | | € |
|------------|--------|------|------|-------|
| T010103201 | 1 | 1/4" | 1900 | 46.80 |
| T010104201 | 1 | 3/8" | 1900 | 46.80 |
| T010204201 | 2 | 3/8" | 3750 | 67.40 |
| T010205201 | 2 | 1/2" | 3750 | 67.40 |
| T010307201 | 3 | 3/4" | 6250 | 94.05 |
| T010309201 | 3 | 1" | 6250 | 94.05 |

TECH DATA
60015



T010 - automatische aftap - 20 µm

| 6835 | Series | | | € |
|------------|--------|------|------|--------|
| T010205202 | 2 | 1/2" | 3750 | 177.95 |
| T010309202 | 3 | 1" | 6250 | 204.55 |

Olienevelaar

TECH DATA
60017



T040

| 6835 | Series | | | € |
|------------|--------|------|------|--------|
| T040103100 | 1 | 1/4" | 2600 | 55.35 |
| T040104100 | 1 | 3/8" | 2600 | 55.35 |
| T040204100 | 2 | 3/8" | 5600 | 79.10 |
| T040205100 | 2 | 1/2" | 5600 | 79.10 |
| T040307100 | 3 | 3/4" | 8200 | 103.10 |
| T040309100 | 3 | 1" | 8200 | 103.10 |

TECH DATA
60017



T040 - automatisch vullen

| 6835 | Series | | | € |
|------------|--------|------|------|--------|
| T040104200 | 1 | 3/8" | 2600 | 92.30 |
| T040205200 | 2 | 1/2" | 5600 | 116.05 |
| T040309200 | 3 | 1" | 8200 | 140.15 |

Filter/regelaar

TECH DATA
60018



T030 - semi-automatische aftap - 20 µm - 0-8 bar

| 6835 | Series | | | € |
|------------|--------|------|------|---------------|
| T030103231 | 1 | 1/4" | 1650 | 82.10 |
| T030104231 | 1 | 3/8" | 1650 | 82.10 |
| T030204231 | 2 | 3/8" | 3000 | 117.40 |
| T030205231 | 2 | 1/2" | 3000 | 117.40 |
| T030307231 | 3 | 3/4" | 4500 | 146.20 |
| T030309231 | 3 | 1" | 4500 | 146.20 |

TECH DATA
60018



T030 - automatische aftap - 20 µm - 0-8 bar

| 6835 | Series | | | € |
|------------|--------|------|------|---------------|
| T030205232 | 2 | 1/2" | 3000 | 228.00 |
| T030309232 | 3 | 1" | 4500 | 256.75 |

Filter + regelaar + olienevelaar

TECH DATA
60019



T200 F+R+L - semi-automatische aftap - 20 µm - 0-8 bar

| 6835 | Series | | | € |
|-------------|--------|------|------|---------------|
| T2001032311 | 1 | 1/4" | 1000 | 148.80 |
| T2001042311 | 1 | 3/8" | 1000 | 148.80 |
| T2002042311 | 2 | 3/8" | 2400 | 212.35 |
| T2002052311 | 2 | 1/2" | 2400 | 212.35 |
| T2003072311 | 3 | 3/4" | 4250 | 278.10 |
| T2003092311 | 3 | 1" | 4250 | 278.10 |

Filter/regelaar + olienevelaar

TECH DATA
60020



T100 FR+L - semi-automatische aftap - 20 µm - 0-8 bar

| 6835 | Series | | | € |
|-------------|--------|------|------|---------------|
| T1001032311 | 1 | 1/4" | 1100 | 132.80 |
| T1001042311 | 1 | 3/8" | 1100 | 132.80 |
| T1002042311 | 2 | 3/8" | 2500 | 192.60 |
| T1002052311 | 2 | 1/2" | 2500 | 192.60 |
| T1003072311 | 3 | 3/4" | 4300 | 235.55 |
| T1003092311 | 3 | 1" | 4300 | 235.55 |

TECH DATA
60020



T100 FR+L - automatische aftap - 20 µm - 0-8 bar

| 6835 | Series | | | € |
|-------------|--------|------|------|---------------|
| T1002052321 | 2 | 1/2" | 2500 | 303.10 |
| T1003092321 | 3 | 1" | 4300 | 346.15 |

Filter/regelaar + actief koolfilter

TECH DATA
60021



T450 - semi-automatische aftap - 5 µm/0,01 µm - 0-8 bar

| 6835 | Series | | | € |
|------------|--------|------|-----|---------------|
| T450103431 | 1 | 1/4" | 600 | 217.95 |
| T450104431 | 1 | 3/8" | 600 | 217.95 |
| T450204431 | 2 | 3/8" | 660 | 290.55 |
| T450205431 | 2 | 1/2" | 660 | 290.55 |
| T450307431 | 3 | 3/4" | 910 | 343.75 |
| T450309431 | 3 | 1" | 910 | 343.75 |



Afsluitventiel

 TECH DATA
60022


T050 - handbediend

| 6835 | Series | | | € |
|-----------|--------|------|------|--------|
| T05010310 | 1 | 1/4" | 1850 | 117.05 |
| T05010410 | 1 | 3/8" | 1850 | 117.05 |
| T05020410 | 2 | 3/8" | 3000 | 129.95 |
| T05020510 | 2 | 1/2" | 3000 | 129.95 |
| T05030710 | 3 | 3/4" | 5200 | 143.05 |
| T05030910 | 3 | 1" | 5200 | 143.05 |

 TECH DATA
60022


T050 - pneumatisch bediend

| 6835 | Series | | | € |
|-----------|--------|------|------|--------|
| T05010430 | 1 | 3/8" | 1850 | 176.20 |
| T05020530 | 2 | 1/2" | 3000 | 189.40 |
| T05030930 | 3 | 1" | 5200 | 226.35 |

 TECH DATA
60022


T050 - elektropneumatisch bediend

| 6835 | Series | | | | € |
|-----------|--------|------|------|----------------------|--------|
| T05010420 | 1 | 3/8" | 1850 | Zonder spoel/stekker | 213.45 |
| T05020520 | 2 | 1/2" | 3000 | Zonder spoel/stekker | 236.70 |
| T05030920 | 3 | 1" | 5200 | Zonder spoel/stekker | 297.80 |

Voor spoelen en stekkers zie pagina 67

Soft Start ventiel

 TECH DATA
60023
Ingangsdruk:
 4 tot 10 bar
 vanaf 1/2":
 3 tot 10 bar

serie 1



vanaf serie 2

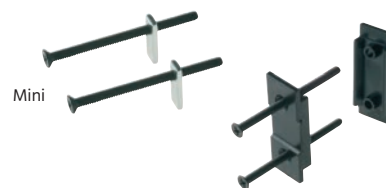


T060 - elektropneumatisch bediend - met snelontluchting

| 6835 | Series | | | € |
|-----------|--------|------|----------------------|--------|
| T06010402 | 1 | 3/8" | Zonder spoel/stekker | 453.05 |
| T06020402 | 2 | 3/8" | Zonder spoel/stekker | 430.45 |
| T06020502 | 2 | 1/2" | Zonder spoel/stekker | 430.45 |
| T06030702 | 3 | 3/4" | Zonder spoel/stekker | 499.65 |
| T06030902 | 3 | 1" | Zonder spoel/stekker | 499.65 |

Voor spoelen en stekkers zie pagina 67

Montage accessoires



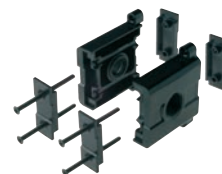
T500 - montageplaat

| 6835 | Series | € |
|--------|--------|------|
| T50000 | Mini | 1.60 |
| T50010 | 1 | 3.60 |
| T50020 | 2 | 4.80 |
| T50030 | 3 | 5.30 |



T505 - eindplaat

| 6835 | Series | | € |
|-----------|--------|------|-------|
| T50510200 | 1 | 1/8" | 10.60 |
| T50510300 | 1 | 1/4" | 10.60 |
| T50510400 | 1 | 3/8" | 10.60 |
| T50520300 | 2 | 1/4" | 12.60 |
| T50520400 | 2 | 3/8" | 12.60 |
| T50520500 | 2 | 1/2" | 12.60 |
| T50530500 | 3 | 1/2" | 13.00 |
| T50530700 | 3 | 3/4" | 13.00 |
| T50530900 | 3 | 1" | 13.00 |



T510 - montageset

| 6835 | Series | | € |
|-----------|--------|------|-------|
| T51010200 | 1 | 1/8" | 17.80 |
| T51010300 | 1 | 1/4" | 17.80 |
| T51010400 | 1 | 3/8" | 17.80 |
| T51020300 | 2 | 1/4" | 22.35 |
| T51020400 | 2 | 3/8" | 22.35 |
| T51020500 | 2 | 1/2" | 22.35 |
| T51030500 | 3 | 1/2" | 23.60 |
| T51030700 | 3 | 3/4" | 23.60 |
| T51030900 | 3 | 1" | 23.60 |



REG16 - wandmontagebeugel

| 6835 | Series | € |
|-----------|--------|------|
| REG160500 | Mini | 2.90 |
| REG161050 | 1 | 3.65 |
| REG162050 | 2 | 4.80 |
| REG163050 | 3 | 6.95 |

Aftapreservoir voor filter



T520 - semi-automatisch

| 6835 | Series | € |
|-----------|--------|-------|
| T52001000 | Mini | 12.90 |
| T52011000 | 1 | 16.60 |
| T52021000 | 2 | 27.15 |
| T52031000 | 3 | 29.70 |



T525 - automatisch

| 6835 | Series | € |
|-----------|--------|--------|
| T52522000 | 2 | 137.60 |
| T52532000 | 3 | 140.15 |

Reservoir voor olieniveelaar



T530 - manueel

| 6835 | Series | € |
|-----------|--------|-------|
| T53000100 | Mini | 10.35 |
| T53010100 | 1 | 14.15 |
| T53020100 | 2 | 24.45 |
| T53030100 | 3 | 28.40 |



T535 - automatisch vullen

| 6835 | Series | € |
|-----------|--------|-------|
| T53510200 | 1 | 32.25 |
| T53520200 | 2 | 42.60 |
| T53530200 | 3 | 46.55 |

Filterelement



FIL04 - 5 µm

| 6835 | Series | € |
|-------------|--------|------|
| FIL04003805 | Mini | 2.90 |
| FIL04101005 | 1 | 4.05 |
| FIL04201005 | 2 | 4.35 |
| FIL04301005 | 3 | 8.75 |

FIL04 - 20 µm

| 6835 | Series | € |
|-------------|--------|------|
| FIL04003820 | Mini | 2.90 |
| FIL04103820 | 1 | 4.05 |
| FIL04201020 | 2 | 4.35 |
| FIL04301020 | 3 | 8.75 |

FIL04 - 50 µm

| 6835 | Series | € |
|-------------|--------|------|
| FIL04003850 | Mini | 2.90 |
| FIL04101050 | 1 | 4.05 |
| FIL04201050 | 2 | 4.35 |
| FIL04301050 | 3 | 8.75 |

Actief koelfilterelement



T545 - 0,01 µm

| 6835 | Series | € |
|--------|--------|-------|
| T54500 | Mini | 31.75 |
| T54510 | 1 | 37.40 |
| T54520 | 2 | 43.90 |
| T54530 | 3 | 47.15 |

Veer



REG06 - voor drukregelaar 0-2 bar

| 6835 | Series | € |
|------------|--------|------|
| REG0600502 | Mini | 2.25 |
| REG0610502 | 1 | 3.85 |
| REG0620502 | 2 | 3.95 |
| REG0630502 | 3 | 4.30 |

REG06 - voor drukregelaar 0-4 bar

| 6835 | Series | € |
|------------|--------|------|
| REG0600504 | Mini | 2.25 |
| REG0610504 | 1 | 3.85 |
| REG0620504 | 2 | 3.95 |
| REG0630504 | 3 | 4.30 |

REG06 - voor drukregelaar 0-8 bar

| 6835 | Series | € |
|------------|--------|------|
| REG0600508 | Mini | 2.25 |
| REG0610508 | 1 | 3.85 |
| REG0620508 | 2 | 3.95 |
| REG0630508 | 3 | 4.30 |

REG06 - voor drukregelaar 0-12 bar

| 6835 | Series | € |
|------------|--------|------|
| REG0600512 | Mini | 2.25 |
| REG0610512 | 1 | 3.85 |
| REG0620512 | 2 | 3.95 |
| REG0630512 | 3 | 4.30 |

Membraan



REG09 - voor drukregelaar

| 6835 | Series | € |
|-----------|--------|------|
| REG090017 | Mini | 6.90 |
| REG091017 | 1 | 8.40 |
| REG092017 | 2 | 9.65 |
| REG093017 | 3 | 9.75 |

Waterdrukregelaars

TECH DATA
30165
Temperatuur:
 0°C tot 80°C

Maximale voordruk:
 15 bar

Materiaal:
 Messing vernikkeld


MINIPRESS - 1 tot 4 bar - BSP female

| ITAP | BSPP | bar | L mm | H mm | € |
|----------|------|-----|---------|---------|-------|
| IT360-12 | 1/2" | 1-4 | 60 | 93 | 18.80 |
| IT360-34 | 3/4" | 1-4 | 60 | 93 | 20.25 |

TECH DATA
10522
Temperatuur:
 0°C tot 80°C

Maximale werkdruk:
 25 bar

Materiaal:
 Messing vernikkeld

Doorlaat: Vol

 EUROPRESS - 1 tot 6 bar - BSP female
 (1/4" manometer aansluiting aan beide zijden)

| ITAP | BSPP | L mm | H mm | € |
|-----------|--------|---------|---------|---------|
| IT143-12 | 1/2" | 77 | 120 | 40.45 |
| IT143-34 | 3/4" | 85 | 150 | 45.50 |
| IT143-1 | 1" | 89 | 160 | 66.25 |
| IT143-114 | 1,1/4" | 125 | 220 | 134.25 |
| IT143-112 | 1,1/2" | 130 | 220 | 150.70 |
| IT143-2 | 2" | 138 | 250 | 228.05 |
| IT143-212 | 2,1/2" | 148 | 256 | 387.50 |
| IT143-3 | 3" | 177 | 285 | 554.05 |
| IT143-4 | 4" | 190 | 310 | 1239.70 |

Automatische ontluichters

TECH DATA
30166
Temperatuur:
 0°C tot 110°C

Maximale werkdruk:
 10 bar

Materiaal:
 Huis: Messing vernikkeld


Serie 362 - BSP female

| ITAP | BSPP | L mm | H mm | € |
|----------|------|---------|---------|-------|
| IT362-38 | 3/8" | 47 | 75 | 8.15 |
| IT362-12 | 1/2" | 47 | 75 | 8.30 |
| IT362-34 | 3/4" | 50 | 90 | 11.65 |
| IT362-1 | 1" | 50 | 90 | 11.80 |

Veiligheidskleppen

TECH DATA
30167
Temperatuur:
 0°C tot 120°C

Maximale werkdruk:
 10 bar

Materiaal:
 Huis: Messing vernikkeld


Serie 367 - openingsdruk 8,5 bar - BSP male/female

| ITAP | BSPP | L mm | H mm | € |
|----------|------|---------|---------|------|
| IT367-12 | 1/2" | 40 | 60 | 5.90 |

Flowmeters



Type A, C, D, EK

Voor de juiste schaalverdeling (zie flowrange) s.v.p. achter het artikelnummer het gewenste **FB** nummer plaatsen. Daarna gevolgd door de code (zie hieronder) voor water of lucht (per eenheid).

Codes: Water ml/min en l/min = **A** Lucht NI/min = **R**
 Water m³/uur = **C** Lucht Nm³/min = **S**

Voorbeeld 1: FLOW-A 2KR voor Flowmeter TYPE A / lucht / flowbereik: 0,1 - 0,9 NI/min
 Voorbeeld 2: FLOW-EK 5FA voor Flowmeter TYPE EK / water / flowbereik: 0,5 - 2,5l/min
 Schaalverdeling gaat uit van vrije doorstroming.

TECH DATA
30168



FLOW-A

FLOW-C

FLOW-D

Flowmeter type A, C & D- voor water en lucht - standaard uitvoering met acrylic body

| FMET | Type | BSPB | € |
|--------|------|------|--------|
| FLOW-A | A | 3/8" | 105.05 |
| FLOW-C | C | 3/4" | 173.25 |
| FLOW-D | D | 1" | 247.05 |

| FB | Flow range | | FLOW-A | |
|----|-------------------|------------------|--------|-------|
| | [H2O] | [air] | [H2O] | [air] |
| 2K | 2 - 20 ml/min | 0,1 - 0,9 NI/min | | |
| 2A | 4 - 34 ml/min | 0,1 - 1,3 NI/min | | |
| 2B | 5 - 60 ml/min | 0,2 - 2 NI/min | | |
| 2C | 10 - 95 ml/min | 0,4 - 2,8 NI/min | | |
| 3K | 0,01 - 0,13 l/min | 0,5 - 6,5 NI/min | | |
| 3A | 0,02 - 0,22 l/min | 0,5 - 8 NI/min | | |
| 3B | 0,02 - 0,36 l/min | 1 - 11 NI/min | | |
| 3C | 0,05 - 0,5 l/min | 1 - 14 NI/min | | |
| 8M | 0,1 - 1,1 l/min | 4 - 30 NI/min | | |
| 8P | 0,2 - 1,8 l/min | 5 - 50 NI/min | | |
| 8S | 0,2 - 2,6 l/min | 5 - 75 NI/min | | |
| 8R | 0,25 - 3 l/min | 10 - 90 NI/min | | |
| 5A | 0,5 - 5 l/min | 10 - 150 NI/min | | |
| 8D | 0,5 - 6,5 l/min | 20 - 220 NI/min | | |

| FB | Flow range | | FLOW-C | |
|----|-----------------|-------------------|--------|-------|
| | [H2O] | [air] | [H2O] | [air] |
| 4A | 0,5 - 5 l/min | 20 - 200 NI/min | | |
| 4B | 1,5 - 6,5 l/min | 25 - 250 NI/min | | |
| 4C | 1 - 10 l/min | 25 - 300 NI/min | | |
| 4D | 2 - 16 l/min | 75 - 450 NI/min | | |
| 4E | 2 - 20 l/min | 50 - 600 NI/min | | |
| 4F | 5 - 30 l/min | 100 - 1000 NI/min | | |

| FB | Flow range | | FLOW-D | |
|----|----------------|-------------------|--------|-------|
| | [H2O] | [air] | [H2O] | [air] |
| 4A | 7,5 - 40 l/min | 200 - 1200 NI/min | | |
| 4B | 7,5 - 50 l/min | 200 - 1400 NI/min | | |
| 4C | 10 - 60 l/min | 300 - 1500 NI/min | | |
| 4D | 10 - 80 l/min | 300 - 2100 NI/min | | |
| 4E | 10 - 100 l/min | 500 - 2500 NI/min | | |

Temperatuur:
 75°C

Maximale werkdruk:
 20 bar

Flow:
 Bij 20°C

TECH DATA
30171



FLOW-EK

Flowmeter type EK- voor water en lucht - standaard uitvoering met nylon body

| FMET | Type | BSPB | € |
|---------|------|------|--------|
| FLOW-EK | EK | 1/4" | 105.05 |

| FB | Flow range | | FLOW-EK | |
|----|-------------------|-------------------|---------|-------|
| | [H2O] | [air] | [H2O] | [air] |
| 2K | 2,0 - 16 ml/min | 0,1 - 0,8 NI/min | | |
| 2L | 2,5 - 30 ml/min | 0,1 - 1,2 NI/min | | |
| 2M | 5 - 55 ml/min | 0,2 - 1,8 NI/min | | |
| 2N | 10 - 80 ml/min | 0,4 - 2,6 NI/min | | |
| 3K | 0,01 - 0,11 l/min | 0,5 - 5,5 NI/min | | |
| 3L | 0,02 - 0,18 l/min | 0,5 - 7 NI/min | | |
| 3M | 0,025 - 0,3 l/min | 1 - 9 NI/min | | |
| 3N | 0,05 - 0,45 l/min | 1 - 12 NI/min | | |
| 4B | 0,05 - 0,5 l/min | 2 - 20 NI/min | | |
| 4A | 0,1 - 1,1 l/min | 2 - 36 NI/min | | |
| 5E | 0,2 - 1,6 l/min | 7,5 - 47,5 NI/min | | |
| 5C | 0,2 - 2,2 l/min | 5 - 70 NI/min | | |
| 5F | 0,5 - 2,5 l/min | 10 - 90 NI/min | | |

Let op: deze flowmeters worden speciaal voor u besteld en kunnen niet geretourneerd worden



Flowmeters



Type HHV, HHK, HHT, HRV, HRK & LH

TECH DATA
30172

Temperatuur:
50°C

Maximale werkdruk:
10 bar

Flow:
Bij 20°C



FLOW-HHV
&
FLOW-HRV



FLOW-HHK
&
FLOW-HRK



FLOW-HHT

Flowmeter type HHV, HHK & HHT - voor water en lucht - standaard uitvoering met grilamid flowbuis, RVS 329 vlotter en NBR dichting - PVC lijm aansluiting

| FMET | Type | mm | € |
|----------|------|----|--------|
| FLOW-HHV | HHV | 20 | 67.50 |
| FLOW-HHK | HHK | 25 | 131.10 |
| FLOW-HHT | HHT | 50 | 199.25 |

TECH DATA
30172

Flowmeter type HRV & HRK - voor water en lucht - standaard uitvoering met grilamid flowbuis, RVS 329 vlotter en NBR dichting - BSP female aansluiting

| FMET | Type | BSP | € |
|----------|------|------|--------|
| FLOW-HRV | HRV | 1/2" | 77.30 |
| FLOW-HRK | HRK | 3/4" | 149.45 |

Flow range FLOW-HHV & FLOW-HRV

| FB | [H2O] | [air] |
|----|-------------------------------|-----------------------------------|
| 6H | 0.02 - 0.11 m ³ /h | 0.015 - 0.07 Nm ³ /min |
| 3H | 0.04 - 0.2 m ³ /h | 0.03 - 0.13 Nm ³ /min |
| 3K | 0.075 - 0.3 m ³ /h | 0.04 - 0.18 Nm ³ /min |
| 3L | 0.15 - 0.5 m ³ /h | 0.06 - 0.28 Nm ³ /min |
| 3M | 0.15 - 0.6 m ³ /h | 0.075 - 0.3 Nm ³ /min |
| 4D | 0.2 - 1.0 m ³ /h | 0.1 - 0.5 Nm ³ /min |
| 4E | 0.2 - 1.3 m ³ /h | 0.1 - 0.65 Nm ³ /min |
| 4F | 0.3 - 1.8 m ³ /h | 0.2 - 0.9 Nm ³ /min |

Flow range FLOW-HHK & FLOW-HRK

| FB | [H2O] | [air] |
|----|-----------------------------|---------------------------------|
| 4F | 0.3 - 1.2 m ³ /h | 0.14 - 0.6 Nm ³ /min |
| 4E | 0.5 - 2 m ³ /h | 0.25 - 1 Nm ³ /min |
| 4A | 0.6 - 2.6 m ³ /h | 0.25 - 1.2 Nm ³ /min |
| 4B | 0.8 - 3.4 m ³ /h | 0.4 - 1.7 Nm ³ /min |
| 4C | 0.8 - 3.6 m ³ /h | 0.4 - 1.8 Nm ³ /min |
| 4D | 1 - 4.75 m ³ /h | 0.4 - 2.2 Nm ³ /min |

Flow range FLOW-HHT

| FB | [H2O] | [air] |
|----|-----------------------------|---------------------------------|
| 4E | 0.5 - 3 m ³ /h | 0.35 - 2.0 Nm ³ /min |
| 4A | 0.6 - 6.4 m ³ /h | 0.4 - 3 Nm ³ /min |
| 4F | 0.5 - 9.5 m ³ /h | 0.5 - 4.25 Nm ³ /min |
| 4B | 1.5 - 12 m ³ /h | 1 - 6 Nm ³ /min |
| 4C | 2 - 18 m ³ /h | 1 - 8.5 Nm ³ /min |
| 4D | 4 - 22 m ³ /h | 2 - 14 Nm ³ /min |

TECH DATA
30173

Temperatuur:
75°C

Maximale werkdruk:
20 bar

Flow:
Bij 20°C



FLOW-LH

Flowmeter type LH - voor water en lucht - RVS 316 uitvoering met acrylic flowbuis, RVS vlotter, NBR dichting en NPT female aansluiting

| FMET | Type | NPTF | € |
|---------|------|------|--------|
| FLOW-LH | LH | 1/4" | 153.30 |

BSP uitvoering is op aanvraag leverbaar

| FB | Flow range | |
|----|--------------------|------------------|
| | FLOW-LH [H2O] | FLOW-LH [air] |
| 4K | 2 - 18 ml/min | 0.1 - 0.9 Nl/min |
| 4A | 2.5 - 30 ml/min | 0.1 - 1.2 Nl/min |
| 4B | 5 - 55 ml/min | 0.2 - 1.8 Nl/min |
| 4C | 15 - 85 ml/min | 0.5 - 2.5 Nl/min |
| 5K | 0.01 - 0.13 l/min | 0.5 - 6 Nl/min |
| 5A | 0.01 - 0.2 l/min | 0.5 - 7 Nl/min |
| 5B | 0.025 - 0.35 l/min | 1 - 10 Nl/min |
| 5C | 0.05 - 0.5 l/min | 2 - 14 Nl/min |
| 8T | 0.1 - 0.75 l/min | 3 - 20 Nl/min |
| 8M | 0.1 - 1 l/min | 5 - 30 Nl/min |
| 8P | 0.2 - 1.6 l/min | 5 - 50 Nl/min |
| 8S | 0.2 - 2.6 l/min | 10 - 85 Nl/min |
| 8R | 0.5 - 3 l/min | 10 - 110 Nl/min |

Let op: deze flowmeters worden speciaal voor u besteld en kunnen niet geretourneerd worden

PMN serie instelbare drukschakelaar

TECH DATA
68789

Materiaal: messing, vanaf type PMN150A staal verzinkt
Seal: NBR
Temperatuur: -5°C tot +60°C



NO contact - push-on 6.3x0.8 - BSPT male

| 9025 | | | | € |
|--------------|------|---------|-----|-------|
| PMN1ABN14K | 1/4" | 0.1-1 | 300 | 16.10 |
| PMN2ABN14K | 1/4" | 0.15-2 | 300 | 16.10 |
| PMN10ABN14K | 1/4" | 2-10 | 300 | 16.10 |
| PMN20ABN14K | 1/4" | 10-20 | 300 | 16.10 |
| PMN50ABN14K | 1/4" | 20-50 | 300 | 17.70 |
| PMN80ABN14K | 1/4" | 50-80 | 300 | 18.15 |
| PMN150AFN14K | 1/4" | 50-150 | 300 | 19.90 |
| PMN250AFN14K | 1/4" | 100-250 | 600 | 21.80 |
| PMN300AFN14K | 1/4" | 50-300 | 600 | 24.30 |

Beschermkap

- Type CAP 1
- Beschermklasse: IP54



Voor PMN, VCN & TBF evo schakelaars

| 9025 | € |
|----------|------|
| 31060-RC | 1.35 |

MS serie instelbare drukschakelaar

TECH DATA
68790

Materiaal: messing
Seal: HNBR
Temperatuur: -25°C tot +140°C



SPDT contact - push-on 6.3x0.8 - BSP male

| 9025 | | | | € |
|---------------|------|--------|-----|-------|
| MS2SCBNTR14 | 1/4" | 0.2-2 | 300 | 24.80 |
| MS10SCBNTR14 | 1/4" | 1-10 | 300 | 24.80 |
| MS50SCBNTR14 | 1/4" | 10-50 | 300 | 26.90 |
| MS100SCBNTR14 | 1/4" | 10-100 | 300 | 27.55 |

PS serie instelbare drukschakelaar

TECH DATA
68790

Materiaal: staal verzinkt
Seal: HNBR
Temperatuur: -25°C tot +140°C



SPDT contact - push-on 6.3x0.8 - BSP male

| 9025 | | | | € |
|---------------|------|--------|-----|-------|
| PS150SCFNTR14 | 1/4" | 30-150 | 600 | 28.30 |
| PS300SCFNTR14 | 1/4" | 50-300 | 600 | 32.35 |

PSM serie instelbare drukschakelaar

TECH DATA
68791

Materiaal: messing
Seal: NBR
Temperatuur: -5°C tot +90°C



SPDT contact - DIN 43650 PG09 - BSP male

| 9025 | | | | € |
|-------------|------|--------|-----|-------|
| PSM2BNR14 | 1/4" | 0.2-2 | 300 | 44.90 |
| PSM10BNR14 | 1/4" | 1-10 | 300 | 44.90 |
| PSM50BNR14 | 1/4" | 10-50 | 300 | 48.40 |
| PSM100BNR14 | 1/4" | 10-100 | 300 | 48.40 |

PSP serie instelbare drukschakelaar

TECH DATA
68791

Materiaal: staal verzinkt
Seal: NBR
Temperatuur: -5°C tot +90°C



SPDT contact - DIN 43650 PG09 - BSP male

| 9025 | | | | € |
|--------------|------|--------|-----|-------|
| PSP150FNTR14 | 1/4" | 30-150 | 600 | 51.85 |
| PSP300FNTR14 | 1/4" | 50-300 | 600 | 57.25 |



Druk- en vacuümschakelaars

NEW


PMC serie instelbare drukschakelaar

TECH DATA
68792

Materiaal:
geanodiseerd aluminium
Seal: NBR
Temperatuur:
-5°C tot +90°C



SPDT contact - DIN 43650 PG09 - BSPT male

| 9025 | | | | € |
|-------|------|--------|-----|-------|
| PMC2 | 1/8" | 0.15-2 | 30 | 62.05 |
| PMC5 | 1/8" | 0.2-5 | 60 | 62.05 |
| PMC10 | 1/8" | 0.5-10 | 100 | 62.05 |
| PMC25 | 1/8" | 10-25 | 100 | 62.05 |
| PMC80 | 1/8" | 25-80 | 150 | 62.05 |

PPC serie instelbare drukschakelaar

TECH DATA
68792

Materiaal:
geanodiseerd aluminium
Seal: NBR
Temperatuur:
-5°C tot +90°C



SPDT contact - DIN 43650 PG09 - BSPT male

| 9025 | | | | € |
|--------|------|---------|-----|-------|
| PPC150 | 1/4" | 30-150 | 600 | 68.95 |
| PPC300 | 1/4" | 150-300 | 600 | 68.95 |

PPCF serie instelbare drukschakelaar

TECH DATA
68792

Materiaal:
geanodiseerd aluminium
Seal: NBR
Temperatuur:
-5°C tot +90°C



SPDT contact - DIN 43650 PG09 - BSPT female

| 9025 | | | | € |
|---------|------|---------|-----|-------|
| PPCF150 | 1/4" | 30-150 | 600 | 70.15 |
| PPCF300 | 1/4" | 150-300 | 600 | 70.15 |

PSK serie instelbare drukschakelaar

TECH DATA
68793

Materiaal:
geanodiseerd aluminium
Seal: NBR
Temperatuur:
-5°C tot +90°C



Met regelknop - DIN 43650 PG09 - BSP female

| 9025 | | | | € |
|--------|------|---------|-----|--------|
| PSK10 | - | 1-10 | 30 | 89.40 |
| PSK100 | 1/4" | 10-100 | 300 | 104.50 |
| PSK360 | 1/4" | 100-360 | 600 | 104.50 |

VCN serie instelbare vacuümschakelaar

TECH DATA
68794

Materiaal: messing
Seal: NBR
Temperatuur: -5°C tot +60°C



NO contact - push-on 6.3x0.8 - BSPT male

| 9025 | | | | € |
|------------|------|--------------------|----|-------|
| VCN2ABN14K | 1/4" | -200 tot -900 mbar | 20 | 20.65 |

VSM serie instelbare vacuümschakelaar

TECH DATA
68795

Materiaal: messing
Seal: NBR
Temperatuur: -5°C tot +90°C



SPDT contact - DIN 43650 PG09 - BSP male

| 9025 | | | | € |
|-----------|------|--------------------|----|-------|
| VSM1BNR14 | 1/4" | -100 tot -500 mbar | 20 | 55.30 |
| VSM2BNR14 | 1/4" | -500 tot -900 mbar | 20 | 55.30 |

VMC serie instelbare vacuümschakelaar

TECH DATA
68796

Materiaal: geanodiseerd aluminium
Seal: NBR
Temperatuur: -5°C tot +90°C



SPDT contact - DIN 43650 PG09 - BSPT male

| 9025 | | | | € |
|-------|------|--------------------|----|-------|
| VMC1 | 1/8" | -250 tot -500 mbar | 20 | 70.20 |
| VMC1A | 1/8" | -500 tot -900 mbar | 20 | 70.20 |

Temperatuurschakelaars

NEW

ELETTROTEC

2

NTB serie temperatuurschakelaar

TECH DATA
68797

- Met 360° draibare kop
 - Vast ingesteld
- Materiaal:** geanodiseerd aluminium
Temperatuur: 120°C



NO contact - DIN 43650 PG09 - BSP male

| 9025 | | | | € |
|----------|------|-----|-----|-------|
| NTB25BA | 3/8" | 25 | 200 | 26.30 |
| NTB25CA | 1/2" | 25 | 200 | 26.30 |
| NTB31BA | 3/8" | 31 | 200 | 26.30 |
| NTB31CA | 1/2" | 31 | 200 | 26.30 |
| NTB38BA | 3/8" | 38 | 200 | 26.30 |
| NTB38CA | 1/2" | 38 | 200 | 26.30 |
| NTB47BA | 3/8" | 47 | 200 | 26.30 |
| NTB47CA | 1/2" | 47 | 200 | 26.30 |
| NTB60BA | 3/8" | 60 | 200 | 26.30 |
| NTB60CA | 1/2" | 60 | 200 | 26.30 |
| NTB70BA | 3/8" | 70 | 200 | 26.30 |
| NTB70CA | 1/2" | 70 | 200 | 26.30 |
| NTB80BA | 3/8" | 80 | 200 | 26.30 |
| NTB80CA | 1/2" | 80 | 200 | 26.30 |
| NTB90BA | 3/8" | 90 | 200 | 26.30 |
| NTB90CA | 1/2" | 90 | 200 | 26.30 |
| NTB100BA | 3/8" | 100 | 200 | 26.30 |
| NTB100CA | 1/2" | 100 | 200 | 26.30 |
| NTB105BA | 3/8" | 105 | 200 | 26.30 |
| NTB105CA | 1/2" | 105 | 200 | 26.30 |

TBF Evo serie temperatuurschakelaar

TECH DATA
68798

- Economische uitvoering
 - Vast ingesteld
- Materiaal:** messing
Temperatuur: 125°C



NC contact - push-on 6.3x0.8 - 3/8" BSP male

| 9025 | | | | € |
|---------------|------|-----|-----|-------|
| TBF-EVO25C38 | 3/8" | 25 | 200 | 18.40 |
| TBF-EVO35C38 | 3/8" | 35 | 200 | 18.40 |
| TBF-EVO45C38 | 3/8" | 45 | 200 | 18.40 |
| TBF-EVO50C38 | 3/8" | 50 | 200 | 18.40 |
| TBF-EVO55C38 | 3/8" | 55 | 200 | 18.40 |
| TBF-EVO60C38 | 3/8" | 60 | 200 | 18.40 |
| TBF-EVO65C38 | 3/8" | 65 | 200 | 18.40 |
| TBF-EVO70C38 | 3/8" | 70 | 200 | 18.40 |
| TBF-EVO75C38 | 3/8" | 75 | 200 | 18.40 |
| TBF-EVO80C38 | 3/8" | 80 | 200 | 18.40 |
| TBF-EVO85C38 | 3/8" | 85 | 200 | 18.40 |
| TBF-EVO90C38 | 3/8" | 90 | 200 | 18.40 |
| TBF-EVO95C38 | 3/8" | 95 | 200 | 18.40 |
| TBF-EVO100C38 | 3/8" | 100 | 200 | 18.40 |
| TBF-EVO105C38 | 3/8" | 105 | 200 | 18.40 |
| TBF-EVO110C38 | 3/8" | 110 | 200 | 18.40 |
| TBF-EVO125C38 | 3/8" | 125 | 200 | 18.40 |

NC contact - push-on 6.3x0.8 - 1/2" BSP male

| 9025 | | | | € |
|---------------|------|-----|-----|-------|
| TBF-EVO25C12 | 1/2" | 25 | 200 | 18.40 |
| TBF-EVO35C12 | 1/2" | 35 | 200 | 18.40 |
| TBF-EVO45C12 | 1/2" | 45 | 200 | 18.40 |
| TBF-EVO50C12 | 1/2" | 50 | 200 | 18.40 |
| TBF-EVO55C12 | 1/2" | 55 | 200 | 18.40 |
| TBF-EVO60C12 | 1/2" | 60 | 200 | 18.40 |
| TBF-EVO65C12 | 1/2" | 65 | 200 | 18.40 |
| TBF-EVO70C12 | 1/2" | 70 | 200 | 18.40 |
| TBF-EVO75C12 | 1/2" | 75 | 200 | 18.40 |
| TBF-EVO80C12 | 1/2" | 80 | 200 | 18.40 |
| TBF-EVO85C12 | 1/2" | 85 | 200 | 18.40 |
| TBF-EVO90C12 | 1/2" | 90 | 200 | 18.40 |
| TBF-EVO95C12 | 1/2" | 95 | 200 | 18.40 |
| TBF-EVO100C12 | 1/2" | 100 | 200 | 18.40 |
| TBF-EVO105C12 | 1/2" | 105 | 200 | 18.40 |
| TBF-EVO110C12 | 1/2" | 110 | 200 | 18.40 |
| TBF-EVO125C12 | 1/2" | 125 | 200 | 18.40 |

LUCHTCONDITIONERING



In-line filters/regelaars



In-line aluminium filter

TECH DATA
824

Temperatuur:
0°C tot 70°C

Maximale werkdruk:
10 bar

Bescherm uw cilinders en
luchtgereedschap door goede filtratie



BSP male/female

| FILO | | | € |
|---------|------|-----|-------|
| 2910013 | 1/4" | 250 | 9.90 |
| 2910017 | 3/8" | 500 | 11.15 |

In-line messing regelaar

TECH DATA
20384

Temperatuur:
0°C tot 70°C

Maximale werkdruk:
10 bar



BSP male/female

| FILO | | | € |
|---------|------|-----|------|
| 2900512 | 1/4" | 300 | 6.30 |

In-line aluminium filter/ waterafscheider

TECH DATA
20383

Temperatuur:
0°C tot 45°C

Maximale werkdruk:
9 bar



BSP male/female

| FILO | | | € |
|---------|------|-----|-------|
| 2900514 | 1/4" | 300 | 17.15 |

In-line aluminium olienevelaar

TECH DATA
20385

Temperatuur:
0°C tot 45°C

Maximale werkdruk:
9 bar



BSP male/female

| FILO | | | € |
|---------|------|-----|------|
| 2900508 | 1/4" | 300 | 9.30 |

Voor

AEROPRO
ENGINEERED FOR PROFESSIONALS

**pneumatisch
gereedschap**



...zie pagina 541

Manometers



Gegarandeerd zuiver. De manometers zijn vervaardigd volgens DIN-16005, DIN-16007, DIN-16255, oppervlakte DIN ISO 1302-3.

Toepassingen: Algemene techniek, instrumentatie, compressoren, bouw, garages, industrie, laboratoria, meet- en regeltechniek, vacuümtechniek, voedingsindustrie enz.

Materiaal: **Huis:** ABS
Binnenwerk: Messing

Temperatuur:
-10°C tot 60°C

! Bij de toepassing en keuze van de manometers 10 tot 15% overcapaciteit incalculeren, om de manometer zuiver te houden.

Manometer - achteraansluiting



ø-40 - BSP male - ABS kast

| | | | | |
|----------|------|----|-------|-------|
| MANO | | | | |
| 56114002 | 1/8" | 40 | 0-2.5 | 14.50 |



ø-40, 50 & 63 - BSP male - ABS kast

| | | | | |
|----------|------|----|------|-------|
| MANO | | | | |
| 56114016 | 1/8" | 40 | 0-16 | 12.95 |
| 56115016 | 1/8" | 50 | 0-16 | 14.50 |
| 56125016 | 1/4" | 50 | 0-16 | 12.95 |
| 56126316 | 1/4" | 63 | 0-16 | 12.95 |



Bandenpomp manometer ø-63 - BSP male - ABS kast - fijne schaalverdeling

| | | | | |
|----------|------|----|------|-------|
| MANO | | | | |
| 56126310 | 1/4" | 63 | 0-10 | 26.00 |



ø-40 - BSP male - ABS kast

| | | | | |
|----------|------|----|-----|-------|
| MANO | | | | |
| 56114004 | 1/8" | 40 | 0-4 | 14.50 |



ø-63 - BSP male - ABS kast

| | | | | |
|----------|------|----|------|-------|
| MANO | | | | |
| 56116325 | 1/4" | 63 | 0-25 | 24.45 |



ø-40, 50 & 63 - BSP male - ABS kast

| | | | | |
|----------|------|----|------|-------|
| MANO | | | | |
| 56114010 | 1/8" | 40 | 0-10 | 12.95 |
| 56115010 | 1/8" | 50 | 0-10 | 13.50 |
| 56125010 | 1/4" | 50 | 0-10 | 13.50 |
| 56116310 | 1/4" | 63 | 0-10 | 14.50 |

TECH DATA
20386



Paneelmanometer ø-40 & 50 - BSP male - ABS kast - met paneelmoer M40

| | | | | |
|----------|------|----|------|-------|
| MANO | | | | |
| 56144010 | 1/8" | 40 | 0-10 | 15.35 |
| 56145010 | 1/8" | 50 | 0-10 | 16.35 |

Manometer - onderaansluiting



ø-50, 63 & 100 - BSP male - ABS kast

| | | | | |
|----------|------|-----|------|-------|
| MANO | | | | |
| 56135016 | 1/4" | 50 | 0-16 | 16.60 |
| 56136316 | 1/4" | 63 | 0-16 | 17.40 |
| 56131016 | 1/2" | 100 | 0-16 | 44.15 |



Manometers



Zeer goede prijs/kwaliteit verhouding.

Toepassingen: Algemene techniek, instrumentatie, compressoren, bouw, garages, industrie, laboratoria, meet- en regeltechniek, vacuümtechniek, en voedingsindustrie.

Materiaal: **Huis:** Gecoat plaatstaal, ABS en RVS.
Binnenwerk: Messing.

Temperatuur:
-10°C tot 80°C

! Bij de toepassing en keuze van manometers 10 tot 15% overcapaciteit incalculeren, om de manometer zuiver te houden.

LUCHTCONDITIONERING

Manometer - achteraansluiting

TECH DATA
20581



ø-40 & 50 - BSPT male messing - stalen kast

| MANO | | mm | bar | PSI | € |
|----------|------|----|------|-------|------|
| 56094001 | 1/8" | 40 | 0-1 | 0-15 | 8.30 |
| 56094002 | 1/8" | 40 | 0-2 | 0-30 | 8.30 |
| 56094004 | 1/8" | 40 | 0-4 | 0-60 | 8.30 |
| 56094006 | 1/8" | 40 | 0-6 | 0-100 | 8.30 |
| 56094010 | 1/8" | 40 | 0-10 | 0-160 | 8.30 |
| 56094012 | 1/8" | 40 | 0-12 | 0-200 | 8.30 |
| 56094020 | 1/8" | 40 | 0-20 | 0-300 | 8.30 |
| 56095001 | 1/8" | 50 | 0-1 | 0-15 | 9.15 |
| 56095002 | 1/8" | 50 | 0-2 | 0-30 | 9.15 |
| 56095004 | 1/8" | 50 | 0-4 | 0-60 | 9.15 |
| 56095006 | 1/8" | 50 | 0-6 | 0-100 | 9.15 |
| 56095010 | 1/8" | 50 | 0-10 | 0-160 | 9.15 |
| 56095012 | 1/8" | 50 | 0-12 | 0-200 | 9.15 |
| 56095020 | 1/8" | 50 | 0-20 | 0-300 | 9.15 |

TECH DATA
20591

RVS



ø-63 - BSP male - geheel RVS

| MANO | | mm | bar | PSI | € |
|-----------|------|----|-------|--------|-------|
| 2038-8484 | 1/4" | 63 | 0-12 | 0-200 | 32.30 |
| 2038-8492 | 1/4" | 63 | 0-20 | 0-300 | 32.30 |
| 2038-8526 | 1/4" | 63 | 0-250 | 0-4000 | 32.30 |

TECH DATA
20584



ø-40 & 50 - BSPT male messing - ABS kast

| MANO | | mm | bar | PSI | € |
|---------|------|----|------|-------|------|
| G40-01R | 1/8" | 40 | 0-1 | 0-15 | 7.15 |
| G40-02R | 1/8" | 40 | 0-2 | 0-30 | 7.15 |
| G40-04R | 1/8" | 40 | 0-4 | 0-60 | 7.15 |
| G40-06R | 1/8" | 40 | 0-6 | 0-100 | 7.15 |
| G40-07R | 1/8" | 40 | 0-7 | 0-100 | 7.15 |
| G40-10R | 1/8" | 40 | 0-10 | 0-160 | 7.15 |
| G40-12R | 1/8" | 40 | 0-12 | 0-200 | 7.15 |
| G40-20R | 1/8" | 40 | 0-20 | 0-300 | 7.15 |
| G50-01R | 1/8" | 50 | 0-1 | 0-15 | 8.00 |
| G50-02R | 1/8" | 50 | 0-2 | 0-30 | 8.00 |
| G50-04R | 1/8" | 50 | 0-4 | 0-60 | 8.00 |
| G50-06R | 1/8" | 50 | 0-6 | 0-100 | 8.00 |
| G50-10R | 1/8" | 50 | 0-10 | 0-160 | 8.00 |
| G50-12R | 1/8" | 50 | 0-12 | 0-200 | 8.00 |
| G50-20R | 1/8" | 50 | 0-20 | 0-300 | 8.00 |
| G50-01T | 1/4" | 50 | 0-2 | 0-30 | 8.00 |
| G50-04T | 1/4" | 50 | 0-4 | 0-60 | 8.00 |
| G50-06T | 1/4" | 50 | 0-6 | 0-100 | 8.00 |
| G50-10T | 1/4" | 50 | 0-10 | 0-160 | 8.00 |
| G50-20T | 1/4" | 50 | 0-20 | 0-300 | 8.00 |

TECH DATA
20588



ø-50 paneelmanometer - BSPT male messing - RVS kast

| MANO | | mm | bar | PSI | € |
|----------|------|----|------|-------|-------|
| G50-12PM | 1/8" | 50 | 0-10 | 0-200 | 15.50 |

Manometer - onderaansluiting

TECH DATA
20582



ø-50 & 100 - BSPT male messing - ABS kast

| MANO | | mm | bar | PSI | € |
|----------|------|-----|------|-------|-------|
| G50-01B | 1/8" | 50 | 0-1 | 0-15 | 8.00 |
| G50-02B | 1/8" | 50 | 0-2 | 0-30 | 8.00 |
| G50-04B | 1/8" | 50 | 0-4 | 0-60 | 8.00 |
| G50-06B | 1/8" | 50 | 0-6 | 0-100 | 8.00 |
| G50-10B | 1/8" | 50 | 0-10 | 0-160 | 8.00 |
| G50-12B | 1/8" | 50 | 0-12 | 0-200 | 8.00 |
| G50-02C | 1/4" | 50 | 0-2 | 0-30 | 8.00 |
| G50-04C | 1/4" | 50 | 0-4 | 0-60 | 8.00 |
| G50-06C | 1/4" | 50 | 0-6 | 0-100 | 8.00 |
| G50-10C | 1/4" | 50 | 0-10 | 0-160 | 8.00 |
| G50-12C | 1/4" | 50 | 0-12 | 0-200 | 8.00 |
| G100-04B | 3/8" | 100 | 0-4 | 0-60 | 23.00 |
| G100-06B | 3/8" | 100 | 0-6 | 0-100 | 23.00 |
| G100-10B | 3/8" | 100 | 0-10 | 0-160 | 23.00 |
| G100-14B | 3/8" | 100 | 0-14 | 0-200 | 23.00 |

TECH DATA
20589

RVS



ø-63 - BSP male - geheel RVS

| MANO | | mm | bar | PSI | € |
|------------|------|----|-------|--------|-------|
| SSG63-001B | 1/4" | 63 | 0-1 | 0-15 | 31.45 |
| SSG63-004B | 1/4" | 63 | 0-4 | 0-60 | 31.45 |
| SSG63-012B | 1/4" | 63 | 0-12 | 0-200 | 31.45 |
| SSG63-025B | 1/4" | 63 | 0-25 | 0-400 | 31.45 |
| SSG63-060B | 1/4" | 63 | 0-60 | 0-1000 | 31.45 |
| SSG63-200B | 1/4" | 63 | 0-200 | 0-3000 | 31.45 |
| SSG63-400B | 1/4" | 63 | 0-400 | 0-6000 | 31.45 |

Manometers

Manometer - onderaansluiting

TECH DATA
20586



ø-63 lagedruk manometer - BSPT male messing - RVS kast

| MANO | | | | € |
|-----------|------|----|-------|-------|
| CG63-100B | 1/4" | 63 | 0-100 | 60.10 |
| CG63-250B | 1/4" | 63 | 0-250 | 60.10 |
| CG63-400B | 1/4" | 63 | 0-400 | 60.10 |
| CG63-600B | 1/4" | 63 | 0-600 | 60.10 |

Vacuümmanometer - achter aansluiting

TECH DATA
20583



ø-40, 50, 63 & 100 - BSPT male messing - ABS kast

| MANO | | | | | € |
|-----------|------|-----|----|------|-------|
| VG40-01R | 1/8" | 40 | -1 | -30" | 8.25 |
| VG50-01R | 1/8" | 50 | -1 | -30" | 8.25 |
| VG50-01T | 1/4" | 50 | -1 | -30" | 8.25 |
| VG63-01T | 1/4" | 63 | -1 | -30" | 12.70 |
| VG100-01T | 3/8" | 100 | -1 | -30" | 26.15 |

Vacuümmanometer - onder aansluiting

TECH DATA
20585



ø-40, 50, 63 & 100 - BSPT male messing - ABS kast

| MANO | | | | | € |
|-----------|------|-----|----|------|-------|
| VG40-01B | 1/8" | 40 | -1 | -30" | 7.40 |
| VG50-01B | 1/8" | 50 | -1 | -30" | 8.15 |
| VG50-01C | 1/4" | 50 | -1 | -30" | 8.75 |
| VG63-01C | 1/4" | 63 | -1 | -30" | 11.40 |
| VG100-01D | 3/8" | 100 | -1 | -30" | 25.95 |

Overige manometers

TECH DATA
20587



ø-50 - flensbevestiging - BSPT male messing achter aansluiting

| MANO | | | | | € |
|-----------|------|----|------|-------|-------|
| 2018-1830 | 1/4" | 50 | 0-10 | 0-160 | 11.60 |
| 2018-1848 | 1/4" | 50 | 0-12 | 0-200 | 12.80 |

TECH DATA
20590



ø-50 lasmanometer - zuurstof - BSP male messing onder aansluiting - stalen kast

| MANO | | | | | € |
|----------|------|----|------|-------|------|
| OG50-010 | 1/4" | 50 | 0-5 | 0-80 | 8.75 |
| OG50-050 | 1/4" | 50 | 0-10 | 0-160 | 8.75 |

TECH DATA
20592



ø-50 lasmanometer - acetyleen - BSP male messing onder aansluiting - stalen kast

| MANO | | | | | € |
|-----------|------|----|------|------|------|
| AG50-0015 | 1/4" | 50 | 0-15 | 0-30 | 9.60 |

RVS



ø-63 bimetaalthermometer - BSP achter aansluiting - RVS kast en insteek (lengte ca. 120mm)

| MANO | | | | € |
|-----------|------|----|-------|-------|
| 2052-8774 | 1/4" | 63 | 0-60 | 33.30 |
| 2052-8782 | 1/4" | 63 | 0-120 | 33.30 |
| 2052-8790 | 1/4" | 63 | 0-200 | 33.30 |
| 2052-8808 | 1/4" | 63 | 0-300 | 33.30 |



Glycerine manometer - onderaansluiting

TECH DATA
20594

ø-63 - BSP male messing - RVS kast

| MANO | | | | | | € |
|------------|------|----|-------|--------|--|-------|
| PG63-001BG | 1/4" | 63 | 0-1 | 0-15 | | 26.50 |
| PG63-002BG | 1/4" | 63 | 0-2 | 0-30 | | 26.50 |
| PG63-004BG | 1/4" | 63 | 0-4 | 0-60 | | 26.50 |
| PG63-006BG | 1/4" | 63 | 0-6 | 0-100 | | 26.50 |
| PG63-012BG | 1/4" | 63 | 0-12 | 0-200 | | 26.50 |
| PG63-020BG | 1/4" | 63 | 0-20 | 0-300 | | 26.50 |
| PG63-025BG | 1/4" | 63 | 0-25 | 0-400 | | 26.50 |
| PG63-040BG | 1/4" | 63 | 0-40 | 0-600 | | 26.50 |
| PG63-060BG | 1/4" | 63 | 0-60 | 0-1000 | | 26.50 |
| PG63-120BG | 1/4" | 63 | 0-120 | 0-2000 | | 26.50 |
| PG63-200BG | 1/4" | 63 | 0-200 | 0-3000 | | 26.50 |
| PG63-250BG | 1/4" | 63 | 0-250 | 0-4000 | | 26.50 |
| PG63-400BG | 1/4" | 63 | 0-400 | 0-6000 | | 26.50 |
| PG63-600BG | 1/4" | 63 | 0-600 | 0-9000 | | 26.50 |

TECH DATA
20593

ø-63 - BSPT male messing - RVS kast

| MANO | | | | | | € |
|-----------|------|----|-------|--------|--|-------|
| G63-001BG | 1/4" | 63 | 0-1 | 0-15 | | 26.50 |
| G63-002BG | 1/4" | 63 | 0-2 | 0-30 | | 26.50 |
| G63-004BG | 1/4" | 63 | 0-4 | 0-60 | | 26.50 |
| G63-006BG | 1/4" | 63 | 0-6 | 0-100 | | 26.50 |
| G63-012BG | 1/4" | 63 | 0-12 | 0-200 | | 26.50 |
| G63-020BG | 1/4" | 63 | 0-20 | 0-300 | | 26.50 |
| G63-025BG | 1/4" | 63 | 0-25 | 0-400 | | 26.50 |
| G63-040BG | 1/4" | 63 | 0-40 | 0-600 | | 26.50 |
| G63-060BG | 1/4" | 63 | 0-60 | 0-1000 | | 26.50 |
| G63-120BG | 1/4" | 63 | 0-120 | 0-2000 | | 26.50 |
| G63-200BG | 1/4" | 63 | 0-200 | 0-3000 | | 26.50 |
| G63-250BG | 1/4" | 63 | 0-250 | 0-4000 | | 26.50 |
| G63-400BG | 1/4" | 63 | 0-400 | 0-6000 | | 26.50 |
| G63-600BG | 1/4" | 63 | 0-600 | 0-9000 | | 26.50 |

ø-100 - BSP male messing - RVS kast

| MANO | | | | | | € |
|------------|------|-----|-------|--------|--|-------|
| HG100-002G | 1/2" | 100 | 0-2.5 | 0-36 | | 68.95 |
| HG100-004G | 1/2" | 100 | 0-4 | 0-58 | | 68.95 |
| HG100-006G | 1/2" | 100 | 0-6 | 0-87 | | 68.95 |
| HG100-010G | 1/2" | 100 | 0-10 | 0-145 | | 68.95 |
| HG100-016G | 1/2" | 100 | 0-16 | 0-232 | | 68.95 |
| HG100-040G | 1/2" | 100 | 0-40 | 0-580 | | 68.95 |
| HG100-100G | 1/2" | 100 | 0-100 | 0-1450 | | 68.95 |
| HG100-160G | 1/2" | 100 | 0-160 | 0-2320 | | 68.95 |
| HG100-250G | 1/2" | 100 | 0-250 | 0-3625 | | 68.95 |
| HG100-400G | 1/2" | 100 | 0-400 | 0-5800 | | 68.95 |

TECH DATA
20597

ø-100 - BSPT male messing - RVS kast

| MANO | | | | | | € |
|------------|------|-----|-------|--------|--|-------|
| HG100-002B | 1/2" | 100 | 0-2.5 | 0-36 | | 68.95 |
| HG100-004B | 1/2" | 100 | 0-4 | 0-58 | | 68.95 |
| HG100-006B | 1/2" | 100 | 0-6 | 0-87 | | 68.95 |
| HG100-010B | 1/2" | 100 | 0-10 | 0-145 | | 68.95 |
| HG100-016B | 1/2" | 100 | 0-16 | 0-232 | | 68.95 |
| HG100-040B | 1/2" | 100 | 0-40 | 0-580 | | 68.95 |
| HG100-100B | 1/2" | 100 | 0-100 | 0-1450 | | 68.95 |
| HG100-160B | 1/2" | 100 | 0-160 | 0-2320 | | 68.95 |
| HG100-250B | 1/2" | 100 | 0-250 | 0-3625 | | 68.95 |
| HG100-400B | 1/2" | 100 | 0-400 | 0-5800 | | 68.95 |

TECH DATA
20598

RVS

ø-63 - BSP male - geheel RVS

| MANO | | | | | | € |
|-------------|------|----|-------|--------|--|-------|
| SSG63-001BG | 1/4" | 63 | 0-1 | 0-15 | | 38.15 |
| SSG63-004BG | 1/4" | 63 | 0-4 | 0-60 | | 38.15 |
| SSG63-012BG | 1/4" | 63 | 0-12 | 0-200 | | 38.15 |
| SSG63-025BG | 1/4" | 63 | 0-25 | 0-400 | | 38.15 |
| SSG63-060BG | 1/4" | 63 | 0-60 | 0-1000 | | 38.15 |
| SSG63-200BG | 1/4" | 63 | 0-200 | 0-3000 | | 38.15 |
| SSG63-400BG | 1/4" | 63 | 0-400 | 0-6000 | | 38.15 |

TECH DATA
20599

RVS

ø-100 - BSP male - geheel RVS

| MANO | | | | | | € |
|------------------|-----|-------|--------|--|--|--------|
| SHG100-002BG1/2" | 100 | 0-2 | 0-30 | | | 138.85 |
| SHG100-006BG1/2" | 100 | 0-6 | 0-100 | | | 138.85 |
| SHG100-016BG1/2" | 100 | 0-6 | 0-250 | | | 138.85 |
| SHG100-040BG1/2" | 100 | 0-40 | 0-600 | | | 138.85 |
| SHG100-100BG1/2" | 100 | 0-100 | 0-1500 | | | 138.85 |
| SHG100-250BG1/2" | 100 | 0-250 | 0-4000 | | | 138.85 |
| SHG100-600BG1/2" | 100 | 0-600 | 0-9000 | | | 138.85 |

Beschermerubber



open



gesloten

ø-63

| MANO | | € |
|--------|----------|-------|
| G63-OB | open | 15.50 |
| G63-CB | gesloten | 32.55 |

Glycerine manometers

Glycerine manometer - achteraansluiting

TECH DATA
20595



Ø-63 - BSPT male messing - RVS kast

| MANO | mm | bar | PSI | € | |
|-----------|------|-----|-------|--------|-------|
| G63-001RG | 1/4" | 63 | 0-1 | 0-15 | 27.90 |
| G63-002RG | 1/4" | 63 | 0-2 | 0-30 | 27.90 |
| G63-004RG | 1/4" | 63 | 0-4 | 0-60 | 27.90 |
| G63-006RG | 1/4" | 63 | 0-6 | 0-100 | 27.90 |
| G63-012RG | 1/4" | 63 | 0-12 | 0-200 | 24.10 |
| G63-020RG | 1/4" | 63 | 0-20 | 0-300 | 24.10 |
| G63-025RG | 1/4" | 63 | 0-25 | 0-400 | 24.10 |
| G63-040RG | 1/4" | 63 | 0-40 | 0-600 | 24.10 |
| G63-060RG | 1/4" | 63 | 0-60 | 0-1000 | 24.10 |
| G63-120RG | 1/4" | 63 | 0-120 | 0-2000 | 24.10 |
| G63-200RG | 1/4" | 63 | 0-200 | 0-3000 | 24.10 |
| G63-250RG | 1/4" | 63 | 0-250 | 0-4000 | 27.90 |
| G63-400RG | 1/4" | 63 | 0-400 | 0-6000 | 27.90 |
| G63-600RG | 1/4" | 63 | 0-600 | 0-9000 | 27.90 |

TECH DATA
20596



Ø-63 - BSP male messing - RVS kast

| MANO | mm | bar | PSI | € | |
|------------|------|-----|-------|--------|-------|
| PG63-001RG | 1/4" | 63 | 0-1 | 0-15 | 27.45 |
| PG63-002RG | 1/4" | 63 | 0-2 | 0-30 | 27.45 |
| PG63-004RG | 1/4" | 63 | 0-4 | 0-60 | 27.45 |
| PG63-006RG | 1/4" | 63 | 0-6 | 0-100 | 27.45 |
| PG63-012RG | 1/4" | 63 | 0-12 | 0-200 | 27.45 |
| PG63-020RG | 1/4" | 63 | 0-20 | 0-300 | 27.45 |
| PG63-025RG | 1/4" | 63 | 0-25 | 0-400 | 27.45 |
| PG63-040RG | 1/4" | 63 | 0-40 | 0-600 | 27.45 |
| PG63-060RG | 1/4" | 63 | 0-60 | 0-1000 | 27.45 |
| PG63-120RG | 1/4" | 63 | 0-120 | 0-2000 | 27.45 |
| PG63-200RG | 1/4" | 63 | 0-200 | 0-3000 | 27.45 |
| PG63-250RG | 1/4" | 63 | 0-250 | 0-4000 | 27.45 |
| PG63-400RG | 1/4" | 63 | 0-400 | 0-6000 | 27.45 |
| PG63-600RG | 1/4" | 63 | 0-600 | 0-9000 | 27.45 |



Paneelmontagebeugel - voor type PG63 met achteraansluiting

| MANO | € |
|--------|------|
| G63-PM | 2.50 |

TECH DATA
20600



RVS

Ø-40 & 63 - BSP male - volledig RVS

| MANO | mm | bar | PSI | € | |
|-----------|------|-----|-------|--------|-------|
| 2038-8583 | 1/4" | 40 | 0-12 | 0-200 | 28.75 |
| 2038-8591 | 1/4" | 40 | 0-20 | 0-300 | 28.75 |
| 2038-8609 | 1/4" | 40 | 0-40 | 0-600 | 28.75 |
| 2038-8625 | 1/4" | 40 | 0-60 | 0-900 | 28.75 |
| 2038-8633 | 1/4" | 40 | 0-250 | 0-4000 | 28.75 |
| 2038-8534 | 1/4" | 63 | 0-12 | 0-200 | 41.85 |
| 2038-8567 | 1/4" | 63 | 0-60 | 0-900 | 41.85 |
| 2038-8575 | 1/4" | 63 | 0-250 | 0-4000 | 41.85 |

TECH DATA
20601



RVS

Ø-100 - BSP male - volledig RVS

| MANO | mm | bar | PSI | € | |
|-----------|------|-----|-------|--------|--------|
| 2038-8435 | 1/2" | 100 | 0-12 | 0-200 | 126.10 |
| 2038-8443 | 1/2" | 100 | 0-20 | 0-300 | 126.10 |
| 2038-8450 | 1/2" | 100 | 0-20 | 0-600 | 126.10 |
| 2038-8476 | 1/2" | 100 | 0-250 | 0-4000 | 126.10 |

Glycerine vacuümmanometer - onderaansluiting

TECH DATA
20593



Ø-63 - BSPT male messing - RVS kast

| MANO | mm | bar | hg | € | |
|-----------|------|-----|----|------|-------|
| VG63-01BG | 1/4" | 63 | -1 | -30" | 27.90 |

Glycerine vacuümmanometer - achteraansluiting

TECH DATA
20595



Ø-63 - BSPT male messing - RVS kast

| MANO | mm | bar | hg | € | |
|----------|------|-----|----|------|-------|
| VG63-01R | 1/4" | 63 | -1 | -30" | 29.75 |

Schokdempers

TECH DATA
28



Maximale werkdruk:
0 tot 20 bar

Messing - lage druk

| MANO | mm | € |
|---------|------|-------|
| 131.8LD | 1/8" | 5.40 |
| 131.4LD | 1/4" | 5.80 |
| 131.3LD | 3/8" | 7.95 |
| 131.2LD | 1/2" | 10.10 |

Maximale werkdruk:
20 tot 300 bar

Messing - hoge druk

| MANO | mm | € |
|---------|------|-------|
| 130.4HD | 1/4" | 14.50 |
| 130.3HD | 3/8" | 17.40 |
| 130.2HD | 1/2" | 22.15 |



Glycerine manometers



Glycerine manometer - onderaansluiting

TECH DATA
10525
Nauwkeurigheid:

 Diameter 63mm: +/- 1,6%
 Diameter 100mm: +/- 1%


ø-63 - BSP male - CrNi-stalen kast - heavy duty

| 6800 | BSPP | mm | bar | PSI | € |
|---------------|------|----|-----|------|-------|
| WG63-14B-1G | 1/4" | 63 | 1 | 15 | 37.20 |
| WG63-14B-1.6G | 1/4" | 63 | 1.6 | 25 | 37.20 |
| WG63-14B-2.5G | 1/4" | 63 | 2.5 | 40 | 37.20 |
| WG63-14B-4G | 1/4" | 63 | 4 | 60 | 37.20 |
| WG63-14B-6G | 1/4" | 63 | 6 | 90 | 37.20 |
| WG63-14B-10G | 1/4" | 63 | 10 | 160 | 37.20 |
| WG63-14B-16G | 1/4" | 63 | 16 | 230 | 37.20 |
| WG63-14B-25G | 1/4" | 63 | 25 | 400 | 37.20 |
| WG63-14B-40G | 1/4" | 63 | 40 | 600 | 37.20 |
| WG63-14B-60G | 1/4" | 63 | 60 | 900 | 37.20 |
| WG63-14B-100G | 1/4" | 63 | 100 | 1600 | 37.20 |
| WG63-14B-160G | 1/4" | 63 | 160 | 2300 | 37.20 |
| WG63-14B-250G | 1/4" | 63 | 250 | 4000 | 37.20 |
| WG63-14B-400G | 1/4" | 63 | 400 | 6000 | 37.20 |
| WG63-14B-600G | 1/4" | 63 | 600 | 9000 | 37.20 |

ø-100 - BSP male - CrNi-stalen kast - heavy duty

| 6800 | BSPP | mm | bar | PSI | € |
|----------------|------|-----|-----|------|-------|
| WG100-38B-2.5G | 3/8" | 100 | 2.5 | 40 | 95.70 |
| WG100-38B-4G | 3/8" | 100 | 4 | 60 | 95.70 |
| WG100-38B-6G | 3/8" | 100 | 6 | 90 | 95.70 |
| WG100-38B-10G | 3/8" | 100 | 10 | 160 | 95.70 |
| WG100-38B-16G | 3/8" | 100 | 16 | 230 | 95.70 |
| WG100-38B-40G | 3/8" | 100 | 40 | 600 | 95.70 |
| WG100-12B-100G | 1/2" | 100 | 100 | 1600 | 95.70 |
| WG100-12B-160G | 1/2" | 100 | 160 | 2300 | 95.70 |
| WG100-12B-250G | 1/2" | 100 | 250 | 4000 | 95.70 |
| WG100-12B-400G | 1/2" | 100 | 400 | 6000 | 95.70 |
| WG100-12B-600G | 1/2" | 100 | 600 | 9000 | 95.70 |

Glycerine vacuümmanometer - onderaansluiting

Nauwkeurigheid:

Diameter 63mm: +/- 1,6%



ø-63 - BSP male

| 6800 | BSPP | mm | hg | bar | € |
|----------------|------|----|--------|--------|-------|
| WG63-14B/-30HG | 1/4" | 63 | -30 Hg | -1 bar | 37.20 |

Glycerine manometer - achter aansluiting

TECH DATA
10525
Nauwkeurigheid:

 Diameter 63mm: +/- 1,6%
 Diameter 100mm: +/- 1%


ø-63 - BSP male - CrNi-stalen kast - heavy duty

| 6800 | BSPP | mm | bar | bar | € |
|---------------|------|----|-----|------|-------|
| WG63-14R-1G | 1/4" | 63 | 1 | 15 | 37.20 |
| WG63-14R-1.6G | 1/4" | 63 | 1.6 | 25 | 37.20 |
| WG63-14R-2.5G | 1/4" | 63 | 2.5 | 40 | 37.20 |
| WG63-14R-4G | 1/4" | 63 | 4 | 60 | 37.20 |
| WG63-14R-6G | 1/4" | 63 | 6 | 90 | 37.20 |
| WG63-14R-10G | 1/4" | 63 | 10 | 160 | 37.20 |
| WG63-14R-16G | 1/4" | 63 | 16 | 230 | 37.20 |
| WG63-14R-25G | 1/4" | 63 | 25 | 400 | 37.20 |
| WG63-14R-40G | 1/4" | 63 | 40 | 600 | 37.20 |
| WG63-14R-60G | 1/4" | 63 | 60 | 900 | 37.20 |
| WG63-14R-100G | 1/4" | 63 | 100 | 1600 | 37.20 |
| WG63-14R-160G | 1/4" | 63 | 160 | 2300 | 37.20 |
| WG63-14R-250G | 1/4" | 63 | 250 | 4000 | 37.20 |
| WG63-14R-400G | 1/4" | 63 | 400 | 6000 | 37.20 |
| WG63-14R-600G | 1/4" | 63 | 600 | 9000 | 37.20 |

ø-100 - BSP male - CrNi-stalen kast - heavy duty

| 6800 | BSPP | mm | bar | PSI | € |
|----------------|------|-----|-----|------|--------|
| WG100-38R-2.5G | 3/8" | 100 | 2.5 | 40 | 150.15 |
| WG100-38R-4G | 3/8" | 100 | 4 | 60 | 150.15 |
| WG100-38R-6G | 3/8" | 100 | 6 | 90 | 150.15 |
| WG100-38R-10G | 3/8" | 100 | 10 | 160 | 150.15 |
| WG100-38R-16G | 3/8" | 100 | 16 | 230 | 150.15 |
| WG100-38R-40G | 3/8" | 100 | 40 | 600 | 150.15 |
| WG100-12R-100G | 1/2" | 100 | 100 | 1600 | 150.15 |
| WG100-12R-160G | 1/2" | 100 | 160 | 2300 | 150.15 |
| WG100-12R-250G | 1/2" | 100 | 250 | 4000 | 150.15 |
| WG100-12R-400G | 1/2" | 100 | 400 | 6000 | 150.15 |
| WG100-12R-600G | 1/2" | 100 | 600 | 9000 | 150.15 |

Glycerine vacuümmanometer - achter aansluiting

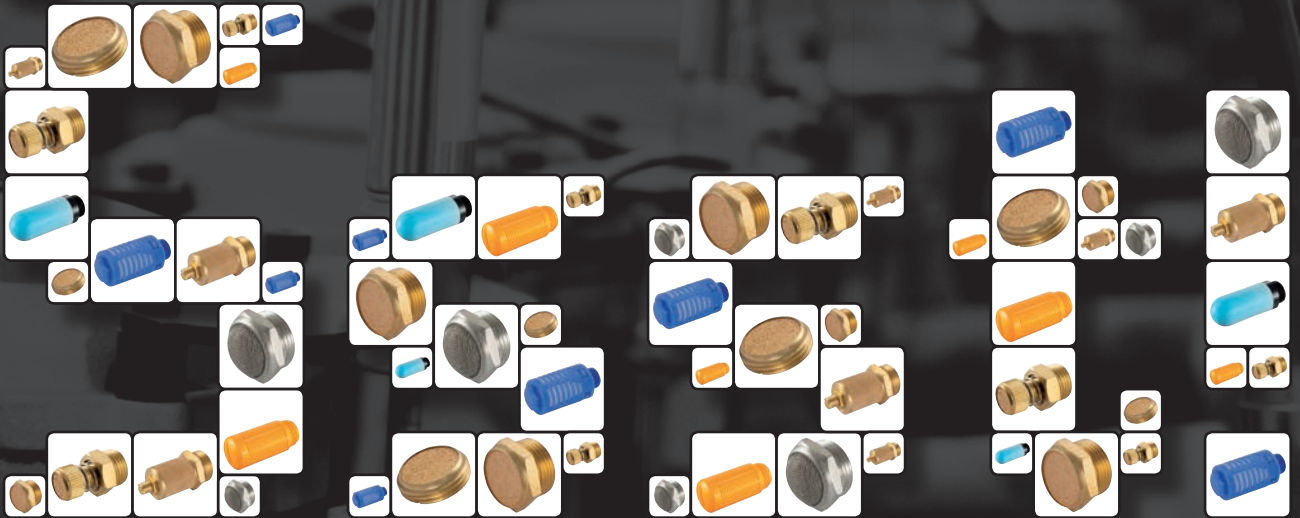
Nauwkeurigheid:

Diameter 63mm: +/- 1,6%



ø-63 - BSP male

| 6800 | BSPP | mm | hg | bar | € |
|----------------|------|----|--------|--------|-------|
| WG63-14R/-30HG | 1/4" | 63 | -30 Hg | -1 bar | 37.20 |



**Geluidsdempers met de beste
prijs-kwaliteitverhouding!**

Geluidsdempers

Professionele geluiddemping voorkomt dat de hoge tonen die perslucht veroorzaakt schade kan aanrichten.

Materialen: Messing (MS-58) / sinterbrons / vernikkeld sinterbrons / roestvast staal / kunststof.

Flow: De aangegeven flow is de vrije flow in liters per minuut bij $\Delta 0,5$ bar.

Temperatuur:

-10°C tot 60°C

Maximale werkdruk:

8-10 bar



Roostermoer - messing



Roostermoer - sinterbrons

| DEMP | | FLOW | H mm | € |
|----------|------|------|------|-------|
| 12001000 | 1/8" | 48 | 4 | 1.45 |
| 12001300 | 1/4" | 90 | 4 | 1.70 |
| 12001700 | 3/8" | 132 | 5 | 3.35 |
| 12002100 | 1/2" | 216 | 8 | 4.55 |
| 12002700 | 3/4" | 390 | 10 | 8.25 |
| 12003200 | 1" | 660 | 10 | 13.00 |

Geluidsdemper - messing



Inschroefdemper - sinterbrons

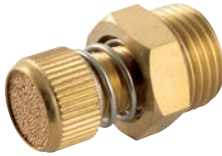
| DEMP | | FLOW | H mm | € |
|----------|------|------|------|-------|
| 12010500 | M5 | 48 | 8 | 1.10 |
| 12011000 | 1/8" | 90 | 13 | 1.25 |
| 12011300 | 1/4" | 168 | 16 | 1.65 |
| 12011700 | 3/8" | 288 | 19 | 2.90 |
| 12012100 | 1/2" | 438 | 24 | 4.00 |
| 12012700 | 3/4" | 618 | 30 | 7.45 |
| 12013200 | 1" | 840 | 36 | 12.35 |



Inschroefdemper - sinterbrons - korte uitvoering - zeskant

| DEMP | | FLOW | H mm | € |
|----------|------|------|------|------|
| 12181000 | 1/8" | 235 | 13 | 2.10 |
| 12181300 | 1/4" | 410 | 16 | 2.60 |

Snelheidsregeldemper - messing



Inschroefdemper - sinterbrons - klein oppervlak

| DEMP | | FLOW | H mm | € |
|----------|------|------|------|------|
| 12081000 | 1/8" | 57 | 12 | 4.55 |
| 12081300 | 1/4" | 96 | 15 | 4.90 |
| 12081700 | 3/8" | 150 | 20 | 8.60 |
| 12082100 | 1/2" | 150 | 20 | 9.10 |



Inschroefdemper - sinterbrons - vierkante kop

| DEMP | | FLOW | H mm | € |
|----------|------|------|------|-------|
| 12041000 | 1/8" | 144 | 7 | 1.70 |
| 12041300 | 1/4" | 240 | 8 | 2.60 |
| 12041700 | 3/8" | 528 | 10 | 4.65 |
| 12042100 | 1/2" | 720 | 14 | 6.75 |
| 12042700 | 3/4" | 1560 | 16 | 13.00 |
| 12043200 | 1" | 1710 | 20 | 20.55 |



Inschroefdemper - sinterbrons - rond

| DEMP | | FLOW | H mm | € |
|----------|------|------|------|------|
| 12100500 | M5 | 48 | 21 | 2.90 |
| 12101000 | 1/8" | 450 | 38 | 3.55 |
| 12101300 | 1/4" | 660 | 51 | 5.50 |



Inschroefdemper - sinterbrons - groot oppervlak

| DEMP | | FLOW | H mm | € |
|----------|------|------|------|-------|
| 12090500 | M5 | 120 | 8 | 7.70 |
| 12091000 | 1/8" | 150 | 16 | 7.70 |
| 12091300 | 1/4" | 180 | 16 | 7.95 |
| 12091700 | 3/8" | 420 | 22 | 15.15 |
| 12092100 | 1/2" | 420 | 22 | 15.50 |
| 12092700 | 3/4" | 1020 | 30 | 27.40 |
| 12093200 | 1" | 1020 | 36 | 39.60 |



Inschroefdemper - sinterbrons - zeskant

| DEMP | | FLOW | H mm | € |
|----------|-------------|------|------|-------|
| 12050500 | M5 | 48 | 8 | 2.30 |
| 12051000 | 1/8" | 294 | 13 | 2.30 |
| 12051009 | 1/8" FEMALE | 180 | 13 | 3.20 |
| 12051300 | 1/4" | 510 | 16 | 3.05 |
| 12051700 | 3/8" | 768 | 19 | 5.60 |
| 12052100 | 1/2" | 1050 | 24 | 7.25 |
| 12052700 | 3/4" | 1500 | 30 | 14.35 |
| 12053200 | 1" | 1800 | 36 | 22.75 |



Inschroefdemper - sinterbrons - groot oppervlak

| DEMP | | FLOW | H mm | € |
|----------|--------|------|------|--------|
| 12112700 | 3/4" | 1860 | 50 | 200.10 |
| 12113200 | 1" | 1980 | 50 | 203.25 |
| 12114200 | 1.1/4" | 2172 | 50 | 207.90 |
| 12114800 | 1.1/2" | 2520 | 50 | 212.60 |
| 12116000 | 2" | 2940 | 65 | 261.80 |

Geluidsdempers

Geluidsdemper - RVS



Inschroefdemper
- messing huis en RVS demping

| DEMP | | FLOW | H mm | € |
|----------|-------------|------|------|-------|
| 12020500 | M5 | 50 | 8 | 1.25 |
| 12021000 | 1/8" FEMALE | 162 | 14 | 2.00 |
| 12021009 | 1/8" | 144 | 13 | 1.65 |
| 12021300 | 1/4" | 216 | 16 | 2.00 |
| 12021700 | 3/8" | 438 | 19 | 3.55 |
| 12022100 | 1/2" | 648 | 24 | 4.90 |
| 12022700 | 3/4" | 900 | 30 | 8.60 |
| 12023200 | 1" | 1560 | 36 | 14.35 |

Temperatuur:
-5°C tot +200°C

RVS



Inschroefdemper - RVS 304 huis en RVS 316 demping

| DEMP | | FLOW | H mm | € |
|----------|------|------|------|-------|
| 12020507 | M5 | 50 | 8 | 4.40 |
| 12021007 | 1/8" | 144 | 13 | 12.40 |
| 12021307 | 1/4" | 216 | 16 | 16.35 |
| 12021707 | 3/8" | 438 | 19 | 22.70 |
| 12022107 | 1/2" | 648 | 24 | 34.85 |
| 12022707 | 3/4" | 900 | 30 | 42.40 |
| 12023207 | 1" | 1560 | 36 | 55.65 |

Snelheidsregeldemper - kunststof



Inschroefdemper - geheel kunststof

| DEMP | | FLOW | H mm | € |
|----------|------|------|------|-------|
| 12500500 | M5 | 90 | 8 | 9.60 |
| 12501000 | 1/8" | 150 | 13 | 8.05 |
| 12501300 | 1/4" | 180 | 15 | 9.05 |
| 12501700 | 3/8" | 390 | 20 | 15.70 |
| 12502100 | 1/2" | 480 | 25 | 20.10 |

Geluidsdemper - kunststof



Inschroefdemper
- POM huis en PE binnenwerk

| DEMP | BSPT | FLOW | € |
|--------|------|------|-------|
| YPS-18 | 1/8" | 156 | 0.75 |
| YPS-14 | 1/4" | 138 | 1.45 |
| YPS-38 | 3/8" | 318 | 1.85 |
| YPS-12 | 1/2" | 318 | 1.85 |
| YPS-34 | 3/4" | 1440 | 15.50 |
| YPS-1 | 1" | 1440 | 15.70 |



Inschroefdemper
- dynamisch (losse korrels)

| DEMP | | FLOW | H mm | € |
|----------|------|------|------|-------|
| 12061000 | 1/8" | 156 | 33 | 2.30 |
| 12061300 | 1/4" | 138 | 43 | 2.75 |
| 12061700 | 3/8" | 318 | 58 | 5.40 |
| 12062100 | 1/2" | 318 | 58 | 5.50 |
| 12062700 | 3/4" | 1440 | 115 | 20.55 |
| 12063200 | 1" | 1440 | 115 | 20.75 |



Inschroefdemper
- statisch

| DEMP | | FLOW | H mm | € |
|----------|------|------|------|------|
| 12071000 | 1/8" | 246 | 10 | 2.30 |
| 12071300 | 1/4" | 330 | 12 | 4.3 |
| 12071700 | 3/8" | 660 | 16 | 5.40 |
| 12072100 | 1/2" | 660 | 16 | 5.50 |

Geluidsdemper - kunststof



Inschroefdemper - kunststof huis en vernikkeld sinterbrons demping

| DEMP | | FLOW | H mm | € |
|----------|------|------|------|-------|
| 12131000 | 1/8" | 336 | 30 | 2.60 |
| 12131300 | 1/4" | 450 | 37 | 3.30 |
| 12131700 | 3/8" | 756 | 47 | 6.05 |
| 12132100 | 1/2" | 1020 | 59 | 8.25 |
| 12132700 | 3/4" | 1320 | 78 | 15.80 |
| 12133200 | 1" | 1500 | 80 | 25.10 |



Inschroefdemper - PE - 6 bar

| DEMP | | FLOW | H mm | € | |
|----------|------|------|------|-----|-------|
| 12140010 | 1/8" | 43 | 10 | 34 | 2.20 |
| 12140013 | 1/4" | 265 | 10 | 43 | 2.30 |
| 12140017 | 3/8" | 459 | 10 | 68 | 2.70 |
| 12140021 | 1/2" | 691 | 10 | 78 | 4.25 |
| 12140027 | 3/4" | 945 | 10 | 140 | 11.70 |
| 12143200 | 1" | 1620 | 10 | 160 | 28.30 |

Geluidsdemper - aluminium

TECH DATA
20351



BSP male

| DEMP | BSPP | € |
|--------|--------|--------|
| SLS050 | 1/2" | 63.40 |
| SLS075 | 3/4" | 70.45 |
| SLS100 | 1" | 74.75 |
| SLS125 | 1 1/4" | 74.70 |
| SLS150 | 1 1/2" | 77.50 |
| SLS200 | 2" | 84.80 |
| SLS250 | 2 1/2" | 165.70 |



BSP male - dubbele aansluiting

| DEMP | BSPP | € |
|--------|--------|--------|
| SLD050 | 1/2" | 51.70 |
| SLD075 | 3/4" | 58.80 |
| SLD150 | 1 1/2" | 76.50 |
| SLD200 | 2" | 115.10 |



MENS, MAATWERK & TECHNIEK
Professionals in Flow & Fluid Technology

www.aimfluid.nl

A close-up photograph of water splashing, with several bubbles and ripples visible, set against a light blue background.

VRAGEN OVER AFSLUITERS, VENTIELEN & APPENDAGES ?

BEL OF MAIL

aim fluid control

+31 (0)499 49 10 90

info@aimfluid.nl

| **SPECIALIST IN FLOW & FLUID TECHNOLOGY** |

aim ontzorgt



aim *fluid control* sinds 1995. Als onafhankelijke specialist in het meten en regelen van diverse soorten vloeistof- en gasstromen (Flow & Fluid Technology) richt aim zich op de professionele markt. De markt met de behoefte aan standaardproducten tot aan engineeringprojecten die verregaande technische kennis vereisen op het gebied van afsluiters, magneetventielen, pneumatiek ventielen, actuators, appendages, vacuümpompen, compressoren, fittingen en toebehoren.

Vanuit het hoofdkantoor en magazijn te Son & Breugel, nabij Science Park Ekkersrijt, ontzorgt aim zijn klanten van A tot Z en biedt technische en logistieke maatwerkoplossingen middels gedegen kennis, een gedreven en persoonlijke service én een klantspecifiek voorraadbeheer.

Ontzorgend, **Betrokken** & **Verantwoordelijk**

aim fluid control b.v.
Ekkersrijt 7310-7312
5692 HH Son en Breugel / Nederland
T. +31(0) 499 49 10 90
E. info@aimfluid.nl
F. +31 (0)499 49 63 70
I. www.aimfluid.nl

