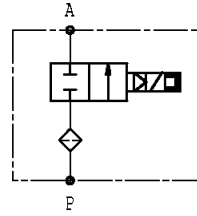
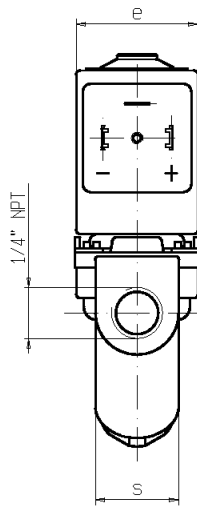
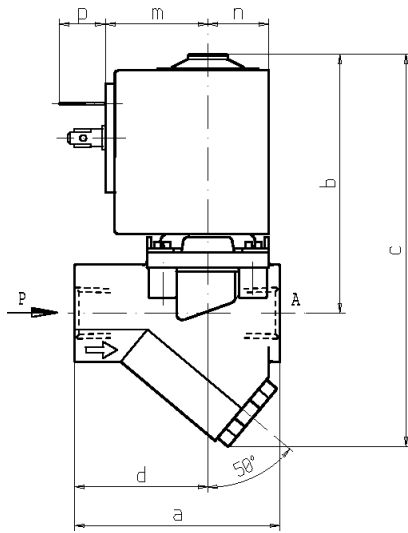




SOLENOID VALVE
2/2 - NC (Normally closed)
Pilot operated
1/4 NPT

L142-NPT
LATCHING MODEL



	a	b	c	d	e	m	n	p	s
in	2.12	2.68	4.05	1.38	1.26	0.63	1.06	0.47	0.87
mm	54	68	103	35	32	27	16	12	22

► GENERAL FEATURES

Pilot operated solenoid valve with full orifice.
 Built-in strainer fitted on the inlet flow path.
 Suitable to shut off liquid and gaseous fluids (verify the compatibility of fluid with materials in contact).
 Not suitable for use with dangerous fluids listed in Group 1, therefore they are free from CE marking in conformity with article 3 § 3 of the European Directive 97/23/EC (Pressure Equipment Directive).

► TECHNICAL FEATURES

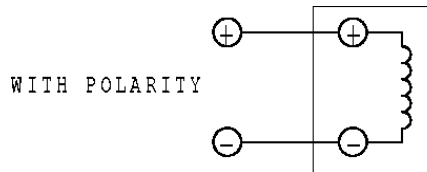
Maximum allowable pressure (PS) 232 psi
Opening time ~30ms
Closing time ~50ms
Fluid temperature +14°F +194°F (NBR)
Max viscosity ~3.98 x 10⁻⁴ft²/sec (~37 cStokes or mm²/s, 5°E)

► MATERIALS IN CONTACT WITH FLUID

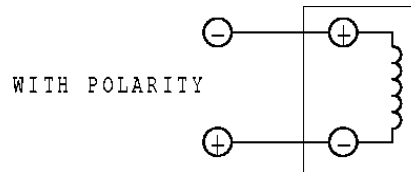
Body Brass
Sealing NBR
Internal components Stainless steel and POM (acetal copolymer)
Seat Brass
Core tube Stainless steel

► COIL

Duty Latching model, polarized type, operating by impulses.
Minimum energizing time 50ms
Coil impregnation Polyester resin
Encapsulation material PP-V0 (self-extinguishing polypropylene).
Coil insulation class A (194°F)
Ambient temperature +14°F +140°F
Electric connections DIN 46340 - 3 poles plug connectors (EN175301-803)
Protection degree IP 65 (EN 60529) with plug connector
Voltages DC 6-12V (+10% -5%)
 (Other voltages on request).



OPEN VALVE



CLOSED VALVE

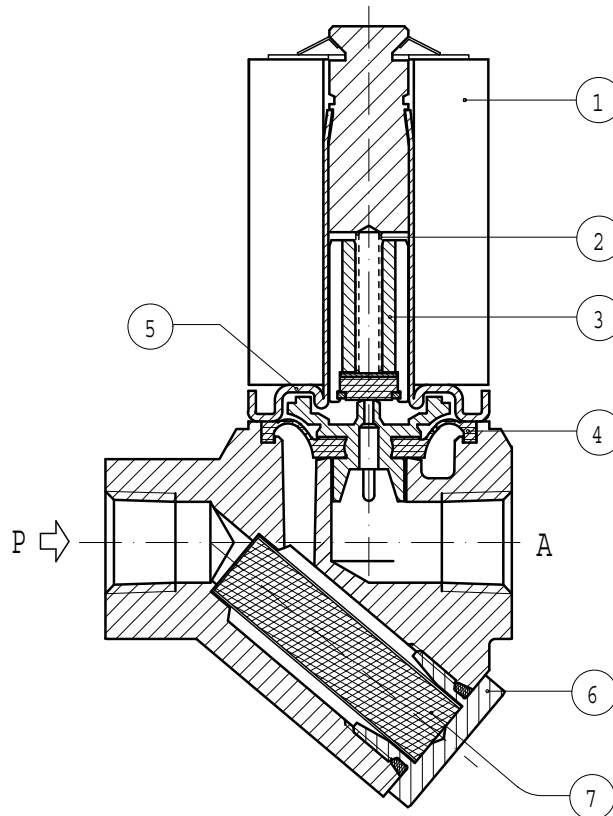
Pipe size (ins)	Orifice size (ins)	Differential pressure (PSI)				Cv (GPM)	Series and type		Power absorption			Sealings	Notes	Weight (lbs)	
		Δp min	Δp max		Valve		Coil	AC (VA)		DC (W)					
			Gases					Liquids			Inrush				Holding
			AC	DC				AC	DC						
1/4 NPT	25/64	5	-	130	-	130	0.58	L142B01	Z570C	-	-	3	NBR	-	0.22

► NOTES

- Sealings : NBR = Nitrile-butylene elastomer

L142-NPT

► SPARE PARTS



Kit description	Kit P.N.	Consisting of:
Core kit	G3042601	Core pos. 3 Core return spring pos.2
Strainer kit	G3092801	Strainer pos.7 Threaded plug pos.6
Core return spring kit	G2781701	N.10 core return spring pos. 3
Diaphragm assembly	2706503	Diaphragm assembly pos.4
Guide assembly	2604403	Guide assembly pos. 5
Coil	Z570C	Coil pos. 1

► INSTALLATION

- Solenoid valve can be mounted in any position; vertical with coil upwards preferred.
- In case of strainer replacement, the threaded plug has to be tightened at 10 ÷ 15 Nm torque.

THE VALIDITY OF REPORTED DATA IS REFERRED TO THE DATE OF ISSUE. POSSIBLE UPDATES ARE AVAILABLE ON REQUEST.